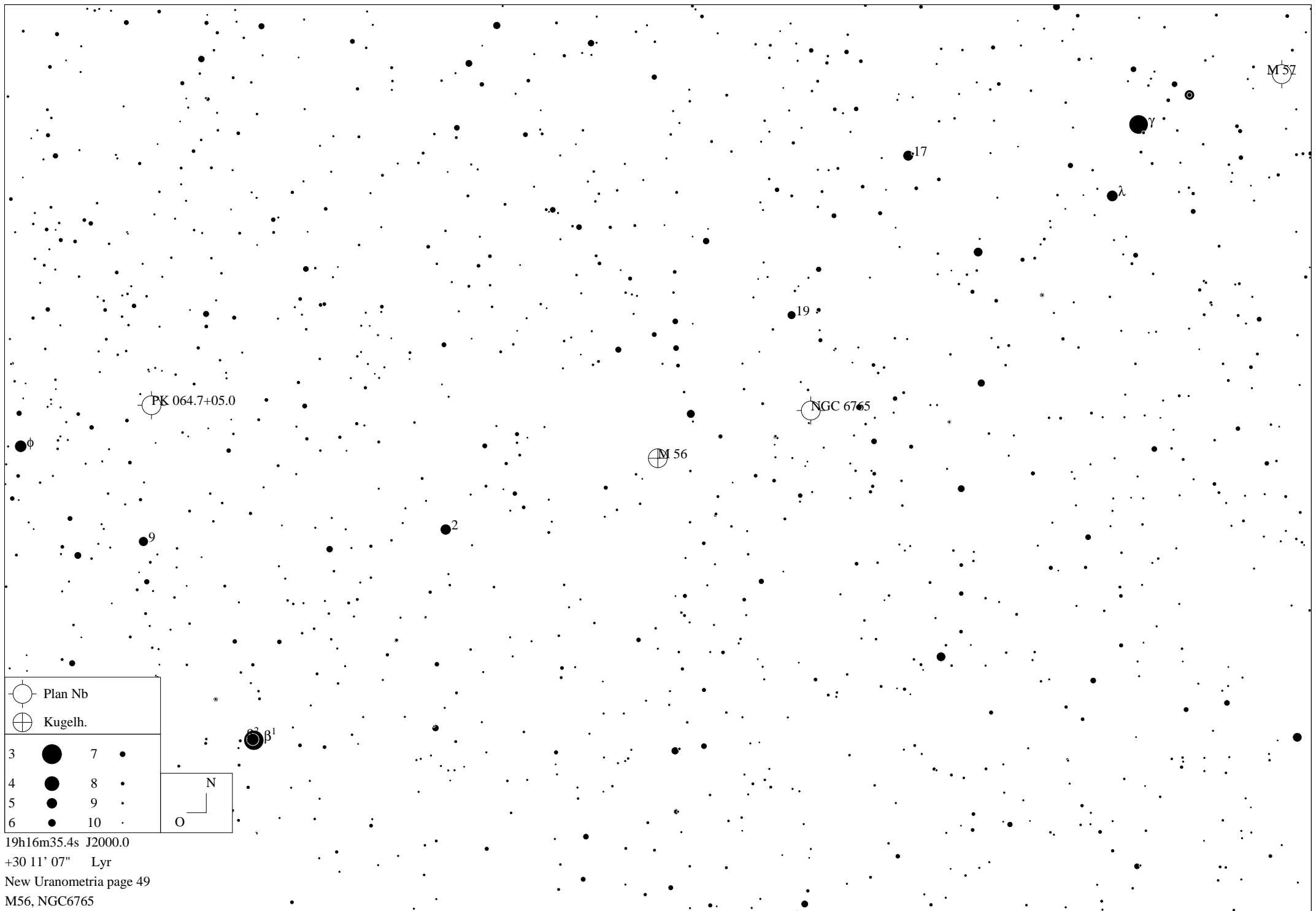


Deep Sky-Objekte in Lyra (Lyr)

Object -----	Type -----	RA --	Dec ---	Mag ---	Size -----	Constellation -----
M56	Globular Cluster	19h 16m 49.6s	+30° 11' 46"	8.4	8.8'	Lyra
M57	Planetary Nebula	18h 53m 48.6s	+33° 02' 16"	8.8	3.0'x2.4'	Lyra
NGC6646	Galaxy	18h 29m 50.8s	+39° 52' 13"	12.7	1.6'x1.3'	Lyra
NGC6703	Galaxy	18h 47m 29.9s	+45° 33' 30"	11.3	2.7'x2.5'	Lyra
NGC6745	Galaxy	19h 01m 53.7s	+40° 45' 18"	13.9	1.3'x0.5'	Lyra
NGC6765	Planetary Nebula	19h 11m 20.5s	+30° 33' 23"	12.9	40"	Lyra
NGC6791	Open Cluster	19h 21m 05.9s	+37° 46' 59"	9.5	10.0'	Lyra
STEPH1	Open Cluster	18h 53m 42.8s	+36° 55' 29"	3.8	20.0'	Lyra

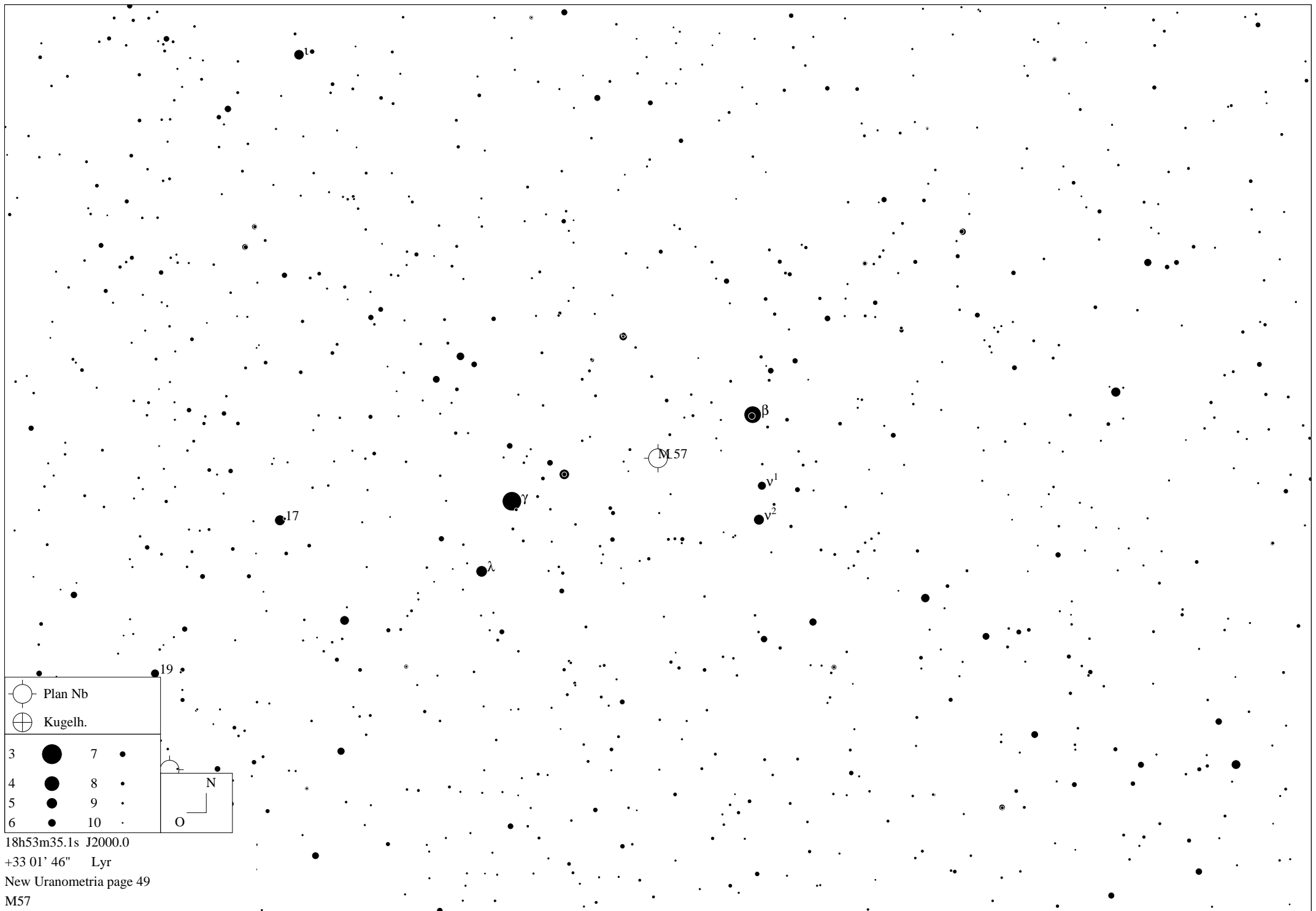


19h16m35.4s J2000.0

+30 11' 07" Lyr

New Uranometria page 49

M56, NGC6765

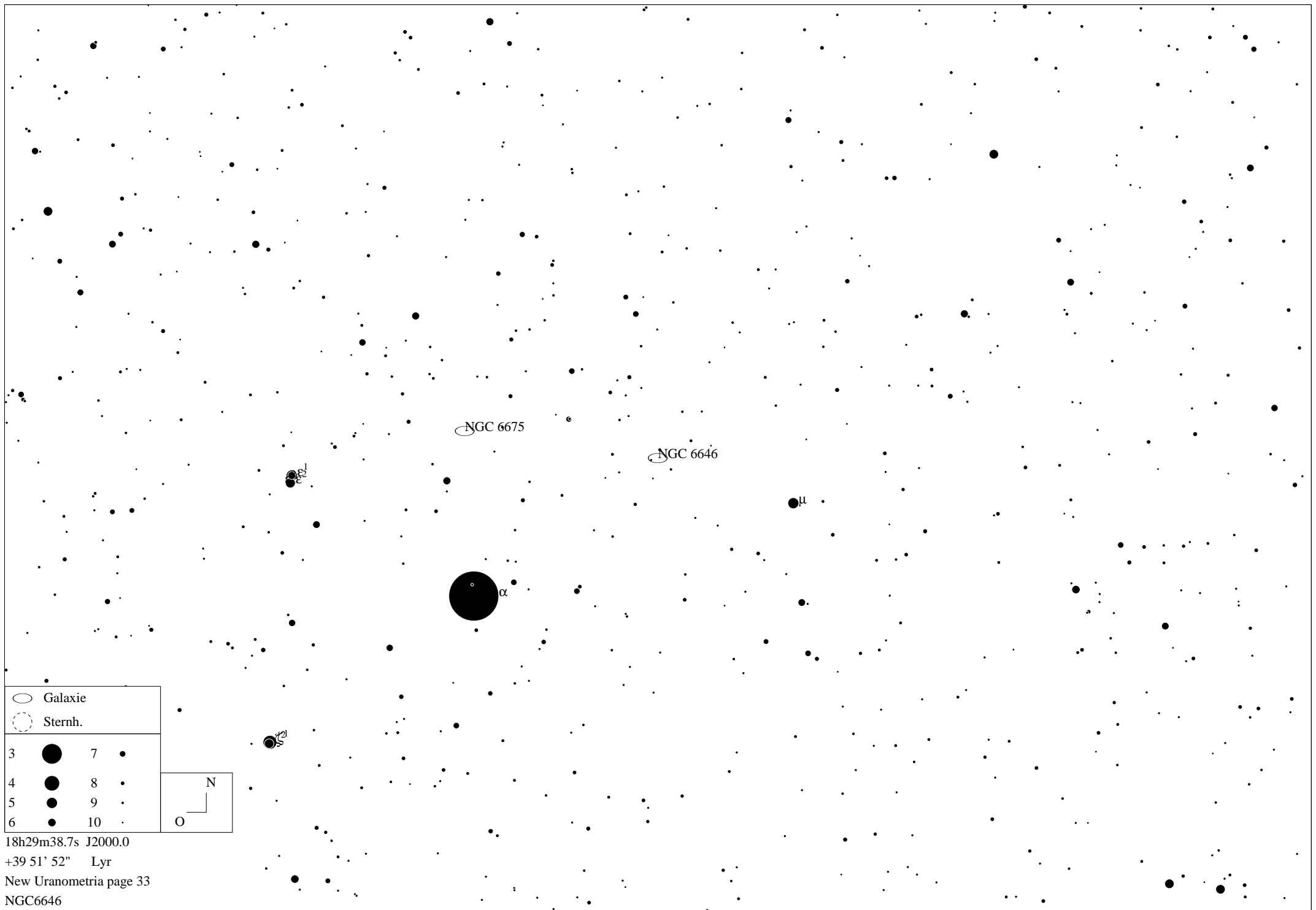


18h53m35.1s J2000.0

+33° 01' 46" Lyr

New Uranometria page 49

M57

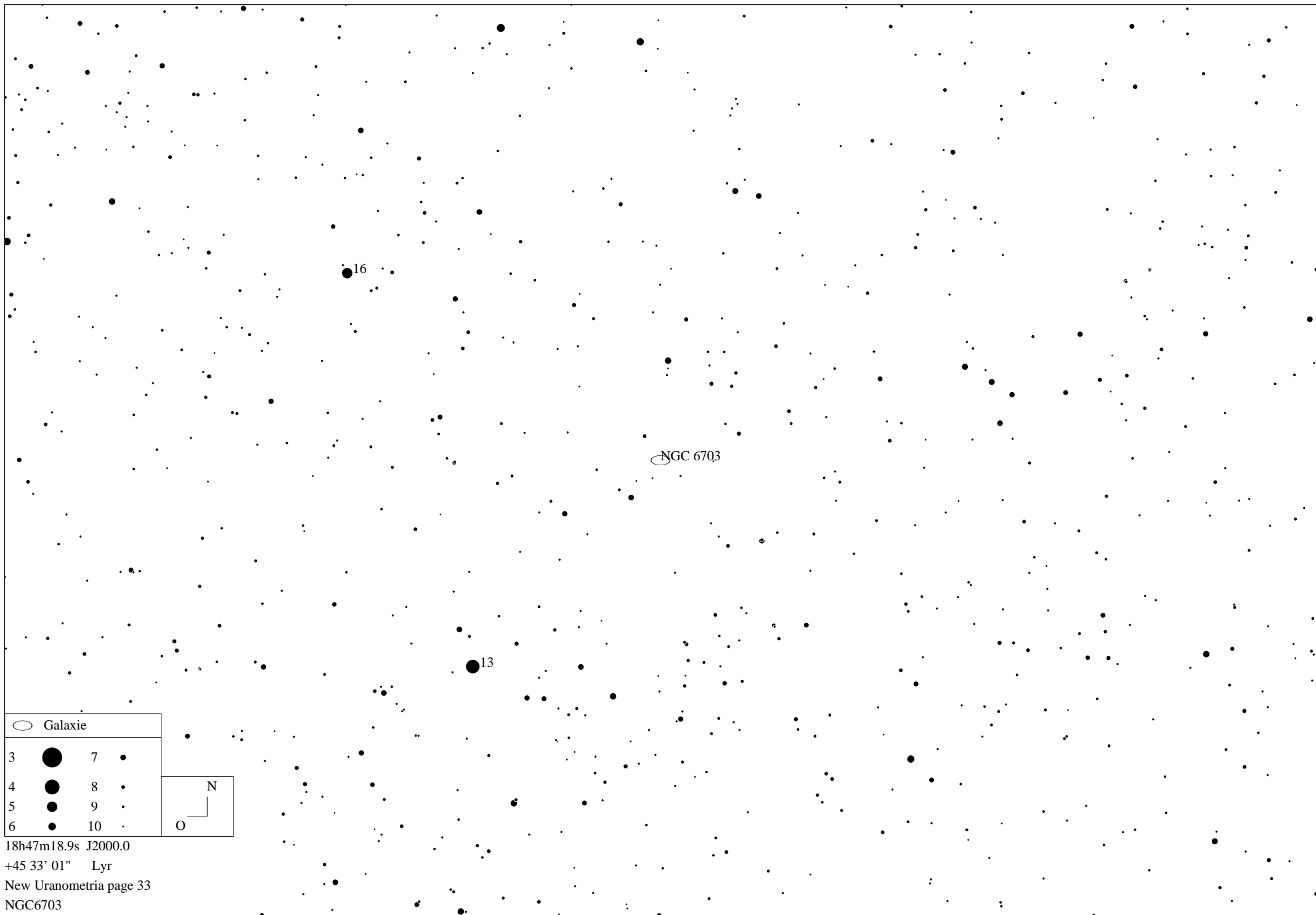


18h29m38.7s J2000.0

+39 51' 52" Lyr

New Uranometria page 33

NGC6646

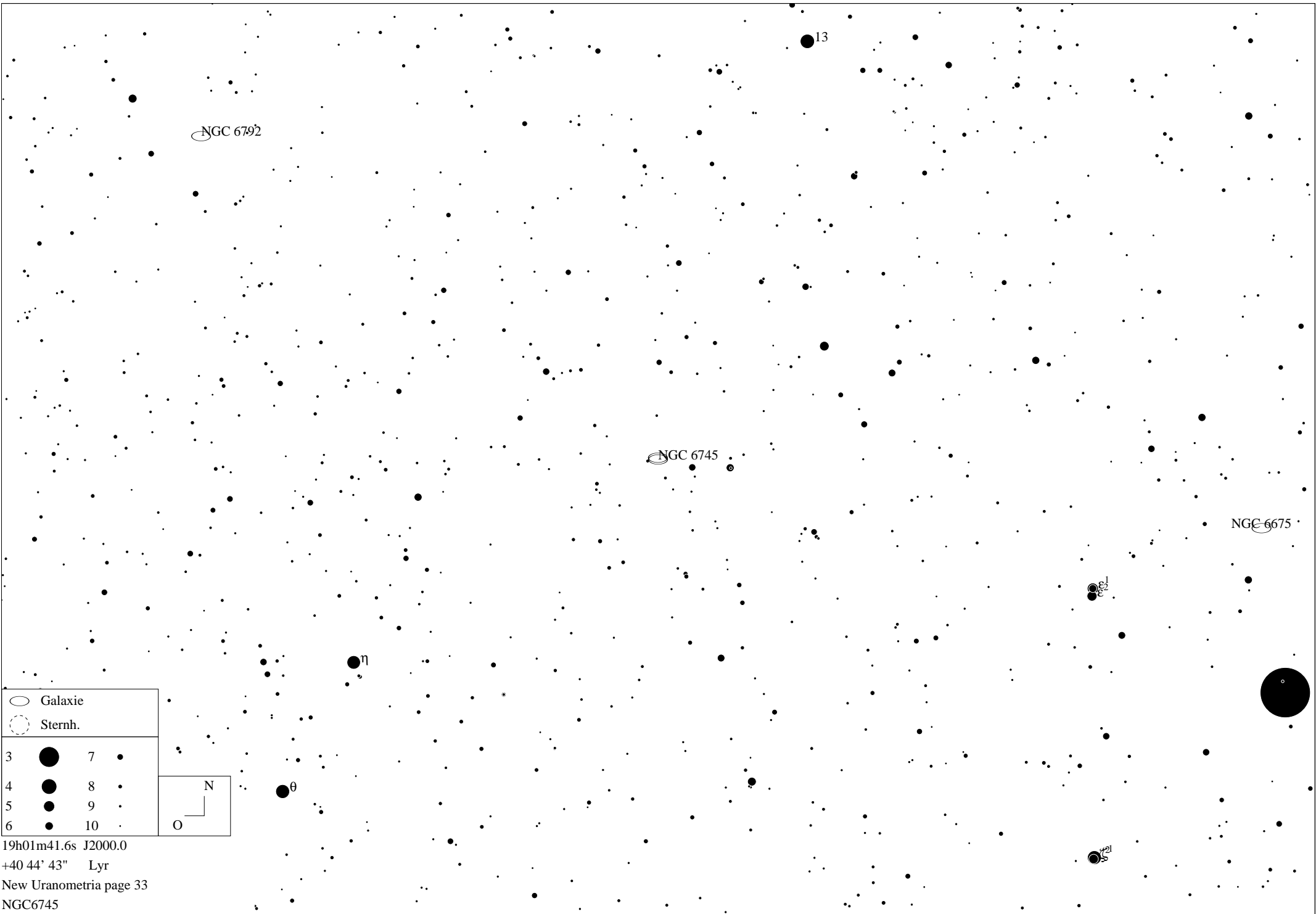


18h47m18.9s J2000.0

+45 33' 01" Lyr

New Uranometria page 33

NGC6703

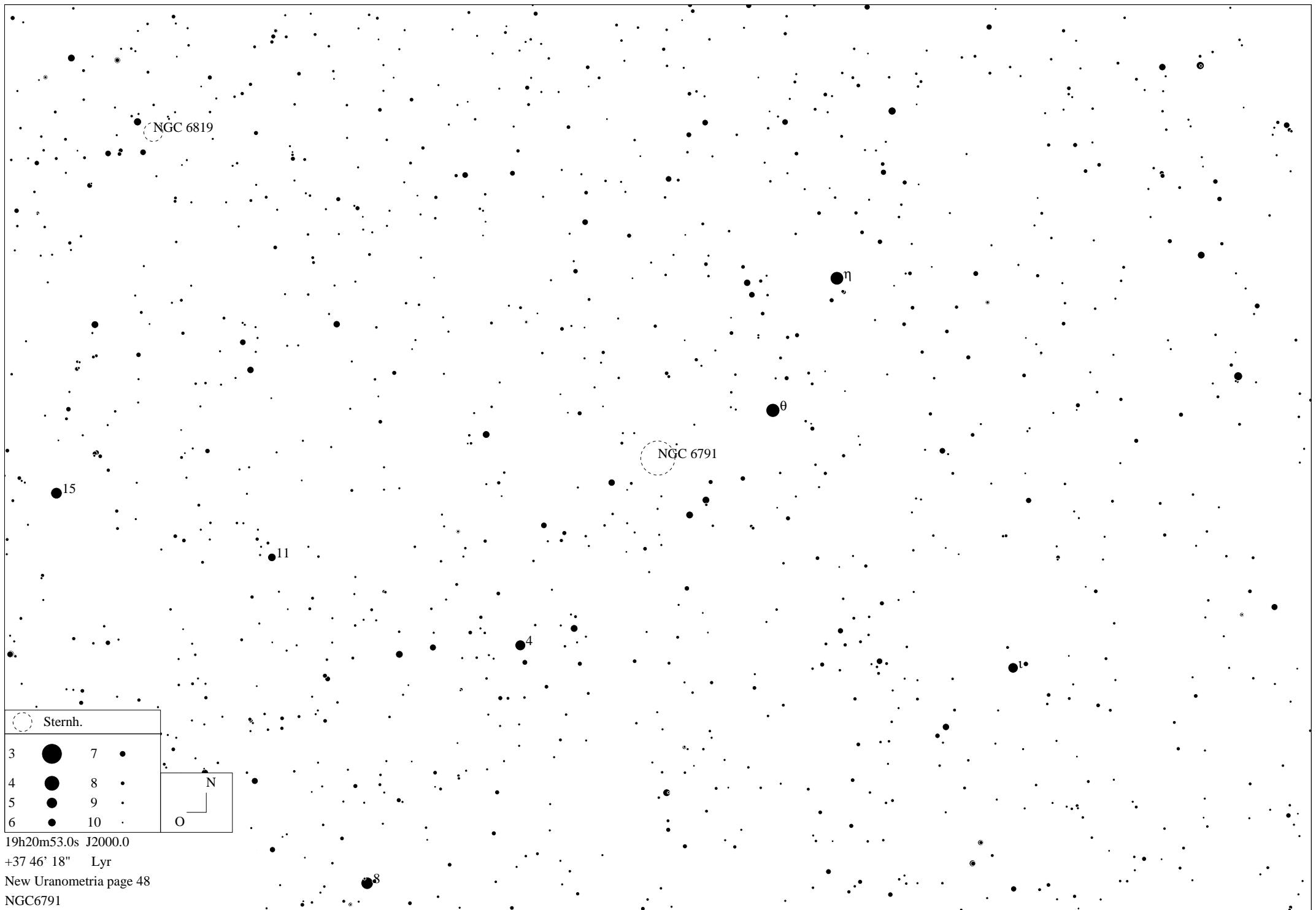


19h01m41.6s J2000.0

+40 44' 43" Lyr

New Uranometria page 33

NGC6745



NGC 6819

η

θ

NGC 6791

15

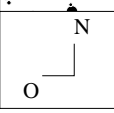
11

4

1

8

○ Sternh.	
3	●
4	●
5	●
6	●
7	●
8	●
9	●
10	●

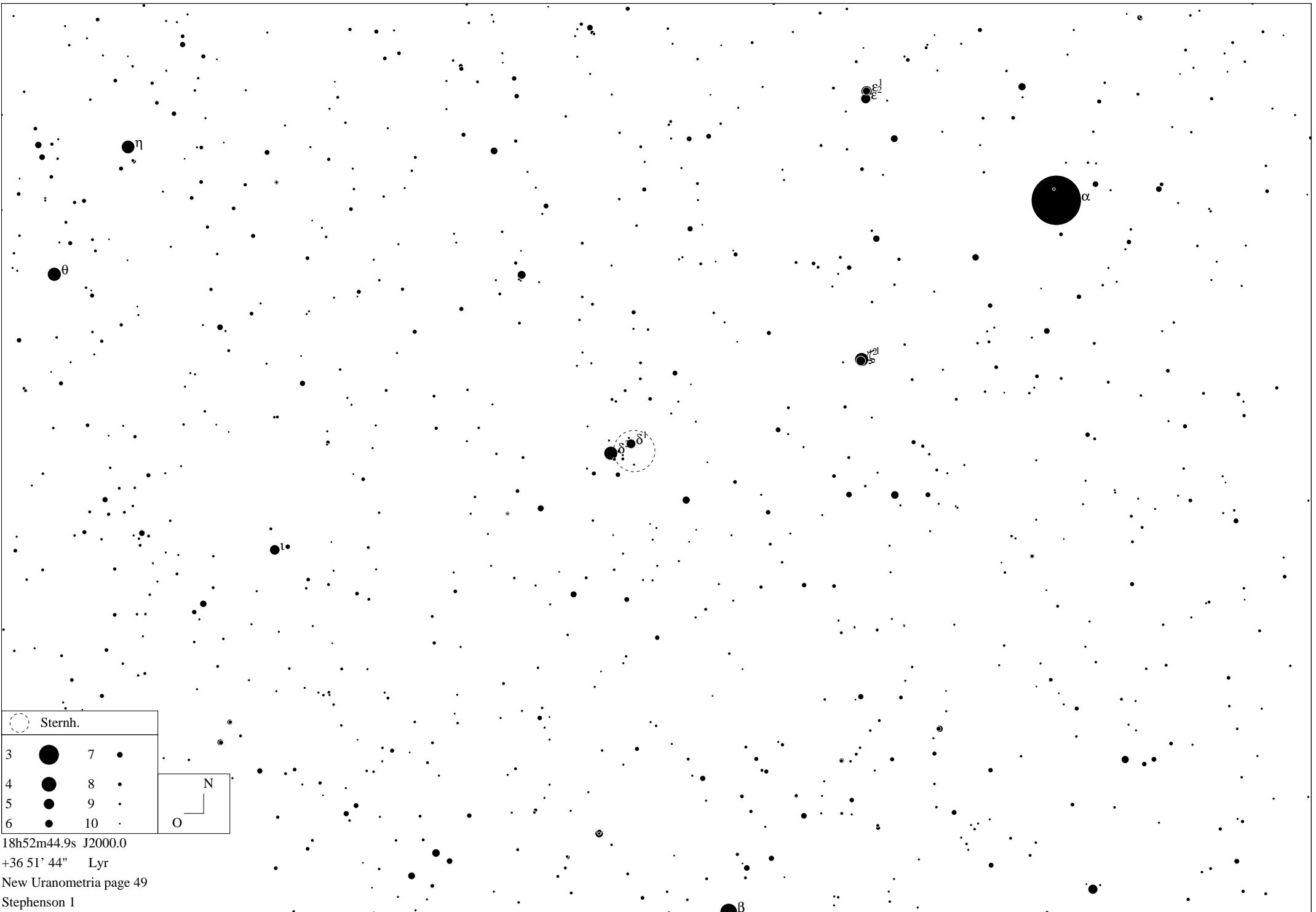


19h20m53.0s J2000.0

+37° 46' 18" Lyr

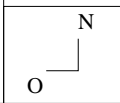
New Uranometria page 48

NGC6791



○ Sternh.

3	●	7	●
4	●	8	●
5	●	9	●
6	●	10	●



18h52m44.9s J2000.0

+36 51' 44" Lyr

New Uranometria page 49

Stephenson 1