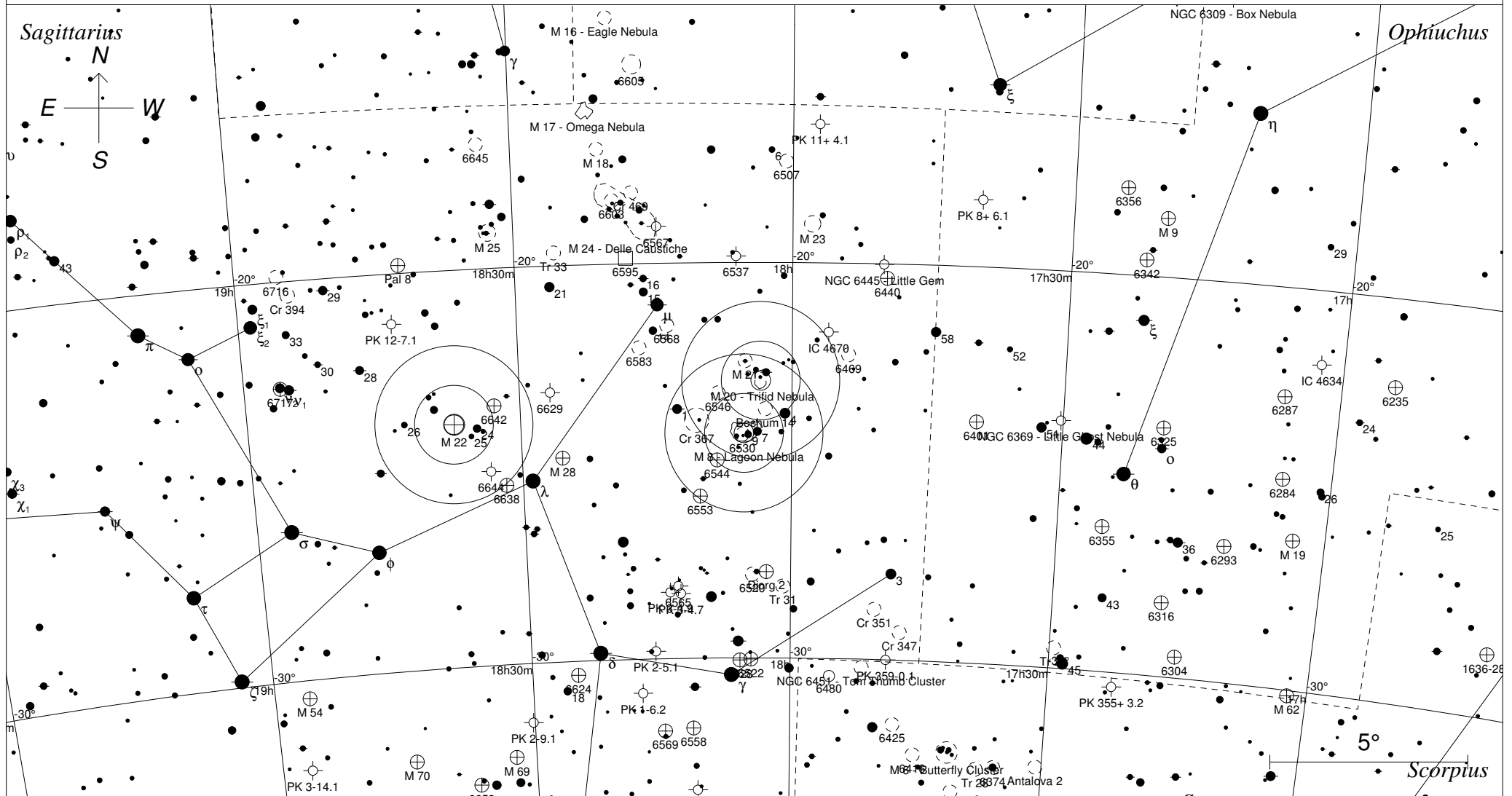


# Der Lagunen- (Messier 8) und Trifidnebel (Messier 20) im Schützen



## STARS

- <3
- 4
- 5
- 6
- 7

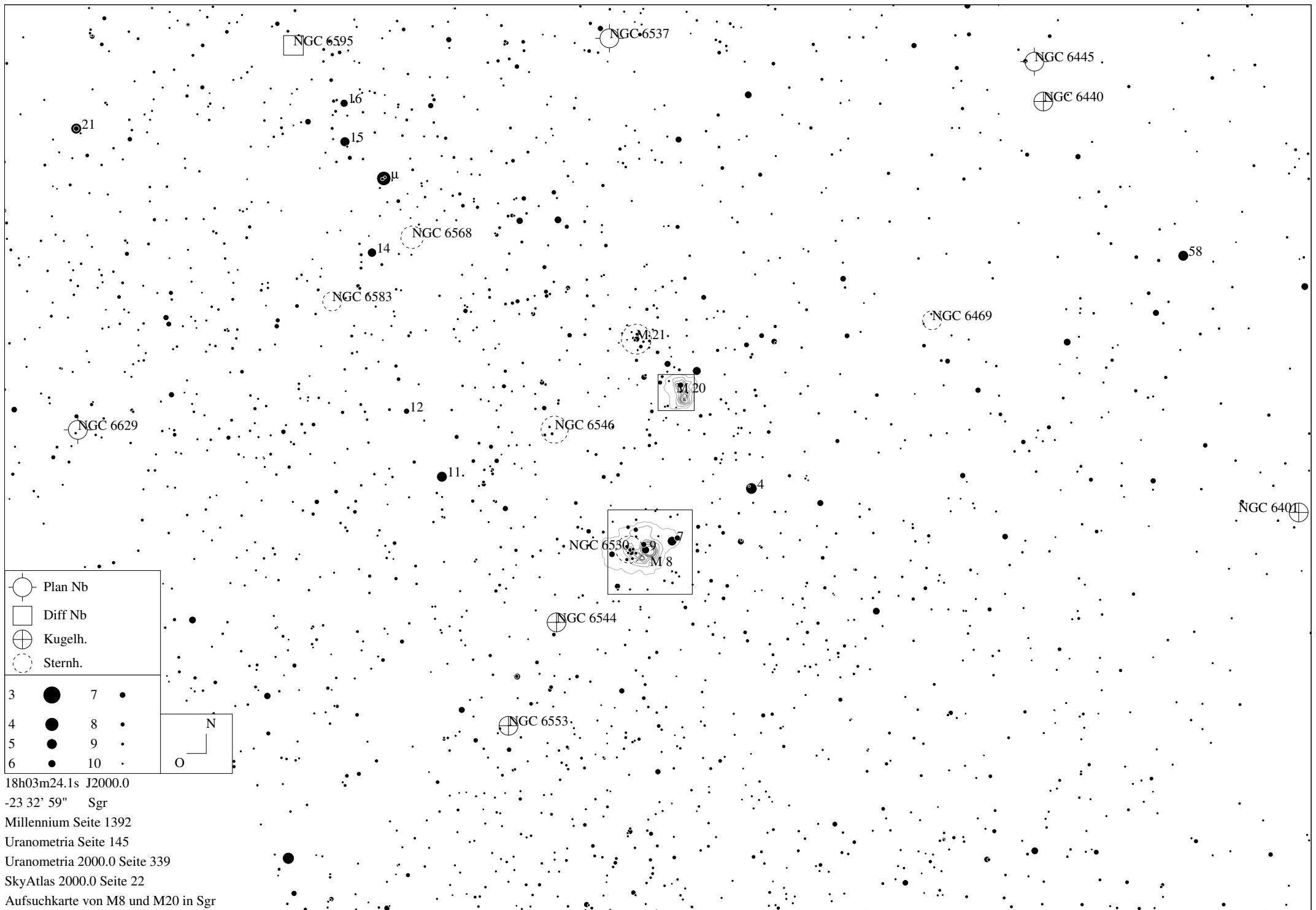
## SYMBOLS

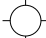



- |                 |                    |                |
|-----------------|--------------------|----------------|
| ● Multiple star | ◻ Dark nebula      | △ Radio source |
| ○ Variable star | ⊕ Globular cluster | × X-ray source |
| ☄ Comet         | ○ Open cluster     | ○ Other object |
| ○ Galaxy        | ○ Planetary nebula |                |
| ◻ Bright nebula | ○ Quasar           |                |







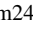
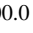
Sterne bis 7.5 mag / DS-Objekte bis 12 mag  
FOV: 20°

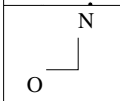
Telradkarte erstellt mit SkyMap Pro 10  
Aufsuchkarte erstellt mit Guide 9

© 2015 Andreas Schnabel



-  Plan Nb
-  Diff Nb
-  Kugelh.
-  Sternh.

3		7	
4		8	
5		9	
6		10	



18h03m24.1s J2000.0  
 -23 32' 59" Sgr  
 Millennium Seite 1392  
 Uranometria Seite 145  
 Uranometria 2000.0 Seite 339  
 SkyAtlas 2000.0 Seite 22  
 Aufsuchkarte von M8 und M20 in Sgr