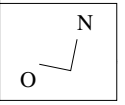


4	●	8	●
5	●	9	●
6	●	10	●
7	●	11	●



NGC 718

Ceres

5 Sep

5 Okt

4 Nov

NGC 936

112

113

75

70

71

66

63

61

60

70

69

25

30

20

15

10

5 Sep

6

11

16

21

31

114

115

116

117

118

119

120

121

122

123

112

113

114

115

116

117

118

119

120

121

122

123

124

125

126

127

128

129

130

131

132

133

134

135

136

137

138

139

140

141

142

143

144

145

146

147

148

149

150

151

152

153

154

155

156

157

158

159

160

161

162

163

164

165

166

167

168

169

170

171

172

173

174

175

176

177

178

179

180

181

182

183

184

185

186

187

188

189

190

191

192

193

194

195

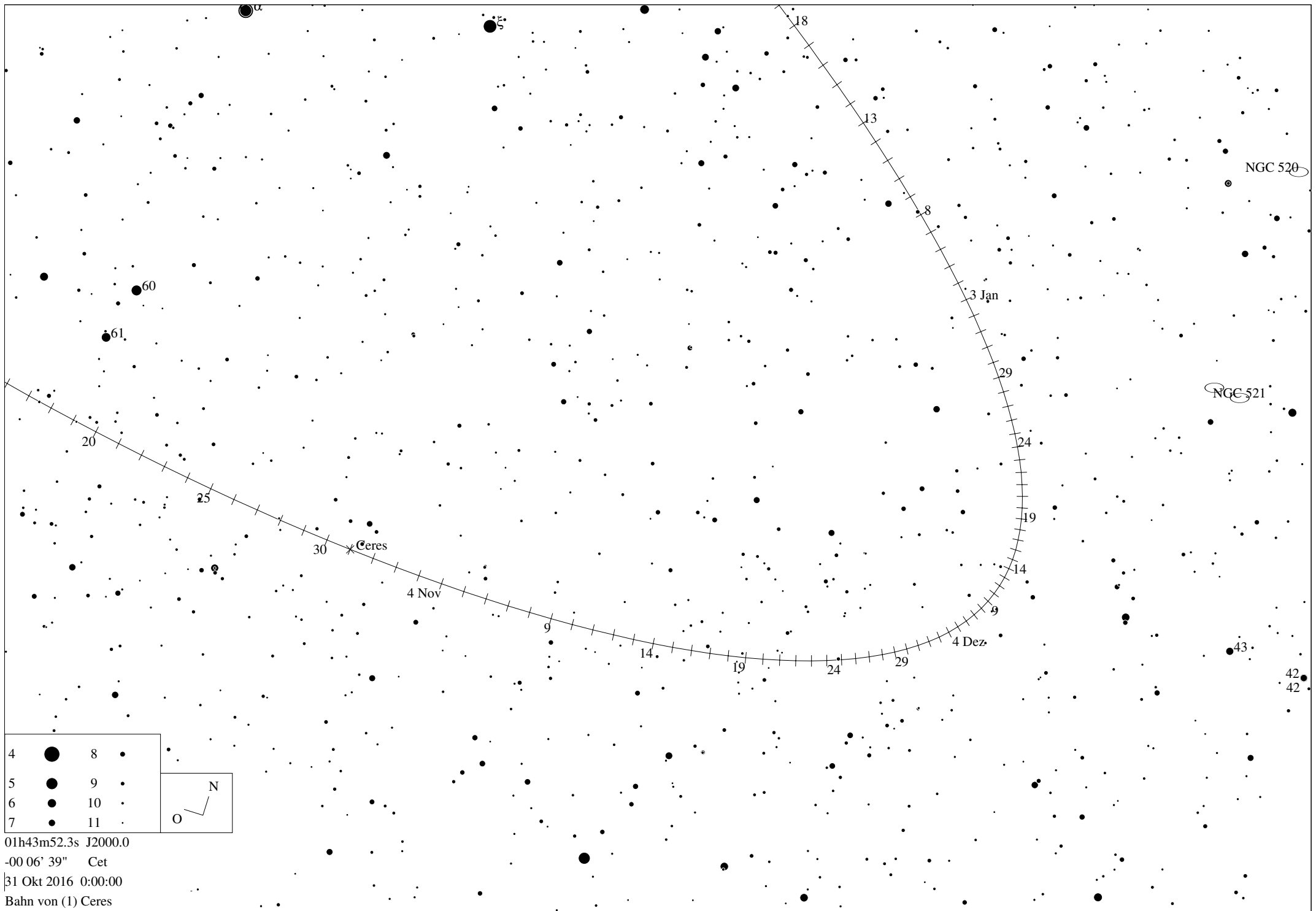
196

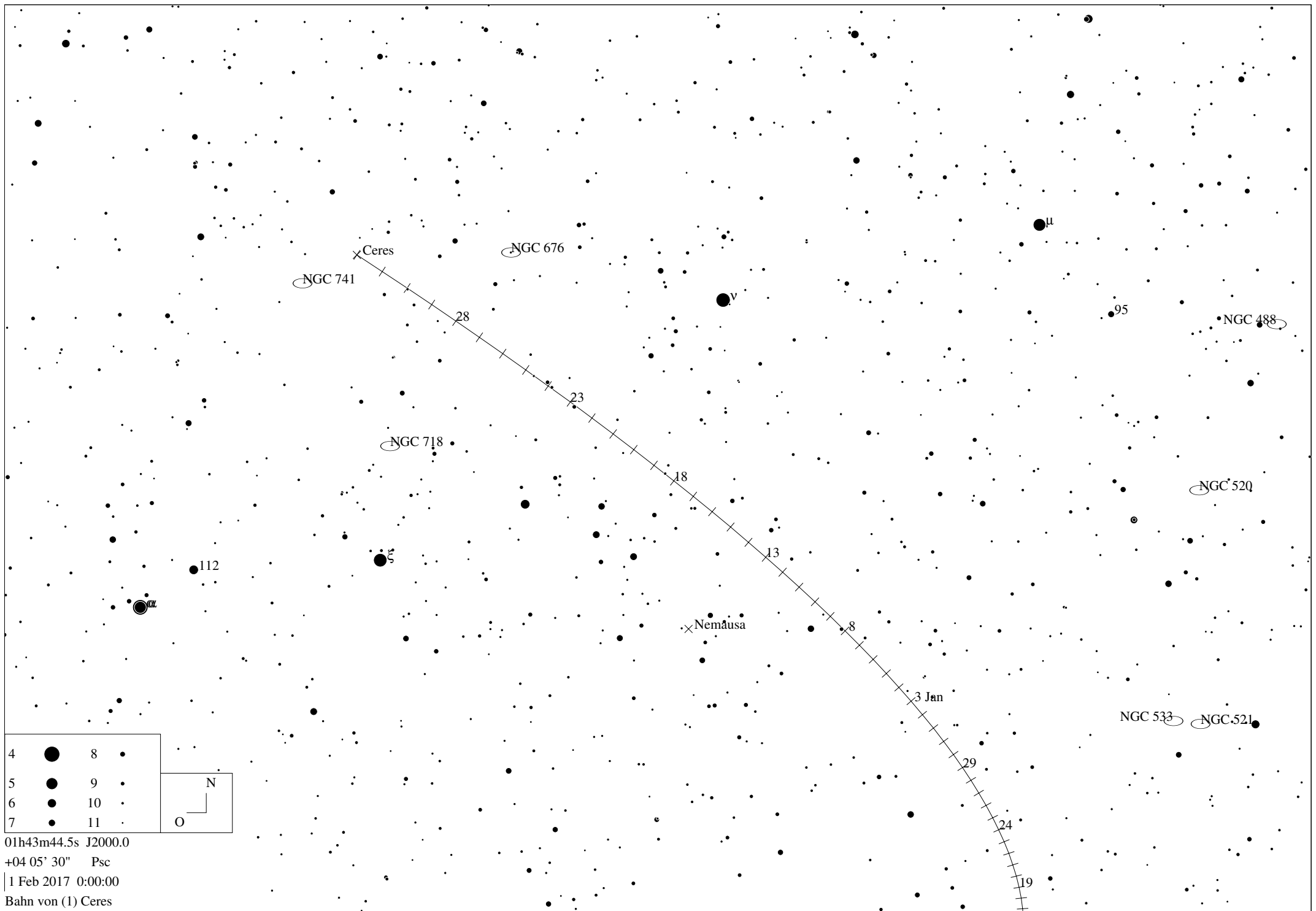
197

198

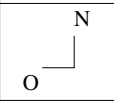
199

200





4	●	8	●
5	●	9	●
6	●	10	●
7	●	11	●



01h43m44.5s J2000.0  
+04 05' 30" Psc  
1 Feb 2017 0:00:00  
Bahn von (1) Ceres

## Ephemeride des Kleinplaneten (1) Ceres

Datum	RA	Deklination	r	delta	mag	Elong	Phase	Höhe	Az.	Gesch.	PA	Stb
1 Aug 2016	02h16m32.66s	+02 04' 16.0"	2.9252	2.6354	8.8	96.2	20.2	13.64	104.32	24.17	84.9	Cet
2 Aug 2016	02h17m11.13s	+02 05' 03.8"	2.9248	2.6217	8.8	97.0	20.1	14.14	104.99	23.54	85.4	Cet
3 Aug 2016	02h17m48.63s	+02 05' 45.2"	2.9243	2.6081	8.8	97.8	20.1	14.65	105.68	22.89	86.0	Cet
4 Aug 2016	02h18m25.13s	+02 06' 20.3"	2.9238	2.5945	8.8	98.6	20.1	15.15	106.36	22.25	86.5	Cet
5 Aug 2016	02h19m00.64s	+02 06' 49.1"	2.9233	2.5809	8.8	99.4	20.0	15.65	107.06	21.59	87.1	Cet
6 Aug 2016	02h19m35.12s	+02 07' 11.4"	2.9228	2.5673	8.8	100.2	20.0	16.15	107.76	20.93	87.8	Cet
7 Aug 2016	02h20m08.56s	+02 07' 27.5"	2.9223	2.5538	8.7	101.0	19.9	16.65	108.47	20.26	88.5	Cet
8 Aug 2016	02h20m40.96s	+02 07' 37.1"	2.9218	2.5404	8.7	101.8	19.9	17.15	109.19	19.59	89.2	Cet
9 Aug 2016	02h21m12.29s	+02 07' 40.4"	2.9213	2.5269	8.7	102.6	19.8	17.64	109.92	18.91	90.0	Cet
10 Aug 2016	02h21m42.55s	+02 07' 37.3"	2.9207	2.5136	8.7	103.4	19.7	18.14	110.66	18.22	90.8	Cet
11 Aug 2016	02h22m11.71s	+02 07' 27.8"	2.9202	2.5002	8.7	104.3	19.7	18.63	111.40	17.53	91.7	Cet
12 Aug 2016	02h22m39.77s	+02 07' 12.0"	2.9197	2.4869	8.7	105.1	19.6	19.13	112.16	16.84	92.7	Cet
13 Aug 2016	02h23m06.70s	+02 06' 49.8"	2.9192	2.4737	8.7	105.9	19.5	19.62	112.92	16.14	93.7	Cet
14 Aug 2016	02h23m32.51s	+02 06' 21.3"	2.9187	2.4605	8.6	106.8	19.4	20.11	113.70	15.44	94.9	Cet
15 Aug 2016	02h23m57.16s	+02 05' 46.5"	2.9182	2.4474	8.6	107.6	19.3	20.60	114.48	14.74	96.1	Cet
16 Aug 2016	02h24m24.92s	+02 05' 05.4"	2.9177	2.4343	8.6	108.5	19.2	21.09	115.27	14.04	97.5	Cet
17 Aug 2016	02h24m42.96s	+02 04' 18.0"	2.9171	2.4214	8.6	109.3	19.1	21.57	116.08	13.33	99.0	Cet
18 Aug 2016	02h25m04.08s	+02 03' 24.3"	2.9166	2.4084	8.6	110.2	19.0	22.06	116.89	12.63	100.8	Cet
19 Aug 2016	02h25m24.00s	+02 02' 24.3"	2.9161	2.3956	8.6	111.0	18.9	22.54	117.72	11.93	102.7	Cet
20 Aug 2016	02h25m42.69s	+02 01' 18.2"	2.9156	2.3828	8.5	111.9	18.8	23.01	118.55	11.24	104.8	Cet
21 Aug 2016	02h26m00.14s	+02 00' 05.7"	2.9150	2.3701	8.5	112.8	18.7	23.49	119.40	10.55	107.3	Cet
22 Aug 2016	02h26m16.34s	+01 58' 47.1"	2.9145	2.3575	8.5	113.7	18.5	23.96	120.26	9.88	110.1	Cet
23 Aug 2016	02h26m31.27s	+01 57' 22.3"	2.9140	2.3450	8.5	114.5	18.4	24.43	121.13	9.23	113.3	Cet
24 Aug 2016	02h26m44.92s	+01 55' 51.4"	2.9134	2.3325	8.5	115.4	18.3	24.90	122.01	8.59	117.0	Cet
25 Aug 2016	02h26m57.26s	+01 54' 14.3"	2.9129	2.3202	8.5	116.3	18.1	25.36	122.91	8.00	121.4	Cet
26 Aug 2016	02h27m08.28s	+01 52' 31.2"	2.9124	2.3079	8.4	117.2	18.0	25.82	123.82	7.44	126.4	Cet
27 Aug 2016	02h27m17.98s	+01 50' 42.0"	2.9118	2.2958	8.4	118.1	17.8	26.28	124.74	6.94	132.2	Cet
28 Aug 2016	02h27m26.32s	+01 48' 46.9"	2.9113	2.2837	8.4	119.0	17.7	26.73	125.68	6.52	138.9	Cet
29 Aug 2016	02h27m33.31s	+01 46' 45.8"	2.9107	2.2718	8.4	120.0	17.5	27.17	126.63	6.19	146.4	Cet
30 Aug 2016	02h27m38.92s	+01 44' 38.9"	2.9102	2.2600	8.4	120.9	17.3	27.62	127.59	5.98	154.7	Cet
31 Aug 2016	02h27m43.16s	+01 42' 26.3"	2.9096	2.2483	8.4	121.8	17.1	28.05	128.56	5.89	163.4	Cet
1 Sep 2016	02h27m46.00s	+01 40' 07.9"	2.9091	2.2367	8.3	122.7	17.0	28.49	129.56	5.93	172.2	Cet
2 Sep 2016	02h27m47.44s	+01 37' 44.0"	2.9085	2.2252	8.3	123.7	16.8	28.91	130.56	6.11	180.8	Cet
3 Sep 2016	02h27m47.47s	+01 35' 14.6"	2.9080	2.2139	8.3	124.6	16.6	29.33	131.58	6.41	188.8	Cet
4 Sep 2016	02h27m46.09s	+01 32' 39.8"	2.9074	2.2027	8.3	125.6	16.4	29.75	132.62	6.82	195.9	Cet
5 Sep 2016	02h27m43.28s	+01 29' 59.7"	2.9069	2.1916	8.3	126.5	16.2	30.16	133.67	7.32	202.2	Cet
6 Sep 2016	02h27m39.06s	+01 27' 14.5"	2.9063	2.1807	8.3	127.5	16.0	30.56	134.73	7.89	207.7	Cet
7 Sep 2016	02h27m33.40s	+01 24' 24.3"	2.9057	2.1699	8.2	128.4	15.8	30.96	135.82	8.52	212.4	Cet
8 Sep 2016	02h27m26.32s	+01 21' 29.2"	2.9052	2.1593	8.2	129.4	15.5	31.34	136.91	9.20	216.5	Cet
9 Sep 2016	02h27m17.80s	+01 18' 29.3"	2.9046	2.1488	8.2	130.4	15.3	31.72	138.03	9.91	220.0	Cet
10 Sep 2016	02h27m07.85s	+01 15' 24.8"	2.9041	2.1385	8.2	131.4	15.1	32.10	139.15	10.65	223.1	Cet
11 Sep 2016	02h26m56.46s	+01 12' 15.9"	2.9035	2.1284	8.2	132.3	14.8	32.46	140.30	11.42	225.8	Cet
12 Sep 2016	02h26m43.65s	+01 09' 02.6"	2.9029	2.1184	8.1	133.3	14.6	32.81	141.46	12.20	228.1	Cet
13 Sep 2016	02h26m29.40s	+01 05' 45.2"	2.9023	2.1086	8.1	134.3	14.4	33.16	142.64	12.99	230.2	Cet
14 Sep 2016	02h26m13.73s	+01 02' 23.9"	2.9018	2.0990	8.1	135.3	14.1	33.50	143.83	13.79	232.1	Cet
15 Sep 2016	02h25m56.64s	+00 58' 58.7"	2.9012	2.0895	8.1	136.3	13.8	33.82	145.04	14.60	233.8	Cet
16 Sep 2016	02h25m38.13s	+00 55' 29.9"	2.9006	2.0802	8.1	137.3	13.6	34.14	146.27	15.41	235.3	Cet
17 Sep 2016	02h25m18.21s	+00 51' 57.6"	2.9000	2.0712	8.0	138.3	13.3	34.44	147.51	16.22	236.7	Cet
18 Sep 2016	02h24m56.88s	+00 48' 22.0"	2.8994	2.0623	8.0	139.3	13.0	34.74	148.77	17.04	237.9	Cet
19 Sep 2016	02h24m34.15s	+00 44' 43.4"	2.8989	2.0536	8.0	140.4	12.8	35.02	150.04	17.86	239.1	Cet
20 Sep 2016	02h24m10.03s	+00 41' 01.9"	2.8983	2.0451	8.0	141.4	12.5	35.29	151.33	18.67	240.2	Cet
21 Sep 2016	02h23m44.53s	+00 37' 17.7"	2.8977	2.0368	8.0	142.4	12.2	35.54	152.63	19.48	241.2	Cet
22 Sep 2016	02h23m17.65s	+00 33' 31.0"	2.8971	2.0287	7.9	143.4	11.9	35.79	153.95	20.28	242.1	Cet
23 Sep 2016	02h22m49.42s	+00 29' 42.1"	2.8965	2.0208	7.9	144.4	11.6	36.02	155.29	21.08	243.0	Cet
24 Sep 2016	02h22m19.84s	+00 25' 51.2"	2.8959	2.0131	7.9	145.5	11.3	36.23	156.64	21.86	243.8	Cet
25 Sep 2016	02h21m48.93s	+00 21' 58.5"	2.8953	2.0057	7.9	146.5	11.0	36.44	158.00	22.64	244.6	Cet
26 Sep 2016	02h21m16.71s	+00 18' 04.3"	2.8947	1.9984	7.9	147.5	10.7	36.62	159.37	23.40	245.3	Cet
27 Sep 2016	02h20m43.21s	+00 14' 09.0"	2.8941	1.9914	7.8	148.5	10.4	36.80	160.76	24.15	246.0	Cet
28 Sep 2016	02h20m08.44s	+00 10' 12.6"	2.8935	1.9847	7.8	149.6	10.1	36.95	162.17	24.88	246.6	Cet
29 Sep 2016	02h19m32.44s	+00 06' 15.6"	2.8929	1.9781	7.8	150.6	9.8	37.10	163.58	25.60	247.3	Cet
30 Sep 2016	02h18m55.23s	+00 02' 18.3"	2.8923	1.9719	7.8	151.6	9.5	37.22	165.00	26.29	247.9	Cet
1 Okt 2016	02h18m16.85s	-00 01' 39.1"	2.8917	1.9658	7.8	152.6	9.2	37.33	166.44	26.97	248.5	Cet
2 Okt 2016	02h17m37.32s	-00 05' 36.3"	2.8911	1.9600	7.7	153.6	8.8	37.42	167.89	27.62	249.1	Cet
3 Okt 2016	02h16m56.68s	-00 09' 32.9"	2.8905	1.9545	7.7	154.6	8.5	37.50	169.34	28.25	249.6	Cet
4 Okt 2016	02h16m14.98s	-00 13' 28.8"	2.8899	1.9492	7.7	155.6	8.2	37.56	170.80	28.85	250.1	Cet
5 Okt 2016	02h15m32.24s	-00 17' 23.4"	2.8893	1.9441	7.7	156.6	7.9	37.60	172.27	29.43	250.7	Cet
6 Okt 2016	02h14m48.50s	-00 21' 16.6"	2.8887	1.9393	7.6	157.6	7.6	37.62	173.75	29.98	251.2	Cet
7 Okt 2016	02h14m03.82s	-00 25' 07.9"	2.8881	1.9348	7.6	158.5	7.3	37.63	175.23	30.51	251.7	Cet
8 Okt 2016	02h13m18.22s	-00 28' 57.1"	2.8875	1.9306	7.6	159.4	7.0	37.61	176.72	31.00	252.2	Cet
9 Okt 2016	02h12m31.77s	-00 32' 43.9"	2.8868	1.9266	7.6	160.3	6.7	37.58	178.21	31.47	252.6	Cet
10 Okt 2016	02h11m44.49s	-00 36' 27.9"	2.8862	1.9229	7.6	161.2	6.4	37.53	179.70	31.91	253.1	Cet
11 Okt 2016	02h10m56.45s	-00 40' 08.9"	2.8856	1.9194	7.6	162.1	6.1	37.47	181.19	32.32	253.6	Cet
12 Okt 2016	02h10m07.68s	-00 43' 46.4"	2.8850	1.9162	7.5	162.9	5.8	37.38	182.69	32.69	254.0	Cet
13 Okt 2016	02h09m18.23s	-00 47' 20.3"	2.8843	1.9133	7.5	163.6	5.6	37.28	184.18	33.04	254.5	Cet

## Ephemeride des Kleinplaneten (1) Ceres

Datum	RA	Deklination	r	delta	mag	Elong	Phase	Höhe	Az.	Gesch.	PA	Stb
----	--	-----	-	-----	---	-----	-----	-----	-----	-----	-----	-----
14 Okt 2016	02h08m28.16s	-00 50' 50.1"	2.8837	1.9107	7.5	164.3	5.4	37.16	185.68	33.35	255.0	Cet
15 Okt 2016	02h07m37.52s	-00 54' 15.6"	2.8831	1.9084	7.5	165.0	5.1	37.02	187.17	33.63	255.4	Cet
16 Okt 2016	02h06m46.35s	-00 57' 36.5"	2.8825	1.9063	7.5	165.6	4.9	36.86	188.66	33.88	255.9	Cet
17 Okt 2016	02h05m54.70s	-01 00' 52.6"	2.8818	1.9045	7.5	166.1	4.8	36.69	190.14	34.10	256.3	Cet
18 Okt 2016	02h05m02.63s	-01 04' 03.4"	2.8812	1.9030	7.5	166.5	4.6	36.49	191.62	34.29	256.8	Cet
19 Okt 2016	02h04m10.18s	-01 07' 08.8"	2.8806	1.9018	7.4	166.8	4.5	36.28	193.10	34.44	257.3	Cet
20 Okt 2016	02h03m17.41s	-01 10' 08.4"	2.8799	1.9008	7.4	167.1	4.4	36.06	194.56	34.56	257.7	Cet
21 Okt 2016	02h02m24.37s	-01 13' 02.0"	2.8793	1.9002	7.4	167.2	4.4	35.81	196.02	34.65	258.2	Cet
22 Okt 2016	02h01m31.12s	-01 15' 49.3"	2.8787	1.8998	7.4	167.2	4.4	35.55	197.48	34.70	258.7	Cet
23 Okt 2016	02h00m37.72s	-01 18' 30.0"	2.8780	1.8997	7.4	167.1	4.4	35.28	198.92	34.72	259.1	Cet
24 Okt 2016	01h59m44.22s	-01 21' 03.8"	2.8774	1.8999	7.4	166.8	4.5	34.99	200.35	34.70	259.6	Cet
25 Okt 2016	01h58m50.67s	-01 23' 30.5"	2.8767	1.9004	7.4	166.5	4.6	34.68	201.78	34.64	260.1	Cet
26 Okt 2016	01h57m57.15s	-01 25' 49.7"	2.8761	1.9012	7.5	166.1	4.8	34.36	203.19	34.55	260.6	Cet
27 Okt 2016	01h57m03.71s	-01 28' 01.4"	2.8754	1.9022	7.5	165.6	4.9	34.02	204.60	34.42	261.1	Cet
28 Okt 2016	01h56m10.41s	-01 30' 05.1"	2.8748	1.9036	7.5	165.0	5.1	33.67	205.99	34.26	261.7	Cet
29 Okt 2016	01h55m17.30s	-01 32' 00.7"	2.8741	1.9052	7.5	164.3	5.4	33.30	207.37	34.06	262.2	Cet
30 Okt 2016	01h54m24.46s	-01 33' 48.0"	2.8735	1.9071	7.5	163.6	5.6	32.92	208.73	33.83	262.7	Cet
31 Okt 2016	01h53m31.93s	-01 35' 26.7"	2.8728	1.9093	7.5	162.8	5.9	32.53	210.09	33.56	263.3	Cet
1 Nov 2016	01h52m39.77s	-01 36' 56.7"	2.8722	1.9117	7.5	162.0	6.1	32.13	211.43	33.26	263.9	Cet
2 Nov 2016	01h51m48.05s	-01 38' 17.7"	2.8715	1.9145	7.6	161.2	6.4	31.72	212.76	32.92	264.5	Cet
3 Nov 2016	01h50m56.81s	-01 39' 29.6"	2.8709	1.9175	7.6	160.3	6.7	31.29	214.07	32.56	265.1	Cet
4 Nov 2016	01h50m06.12s	-01 40' 32.3"	2.8702	1.9208	7.6	159.3	7.0	30.85	215.37	32.16	265.7	Cet
5 Nov 2016	01h49m16.02s	-01 41' 25.6"	2.8696	1.9244	7.6	158.4	7.3	30.41	216.66	31.73	266.4	Cet
6 Nov 2016	01h48m26.57s	-01 42' 09.3"	2.8689	1.9282	7.6	157.4	7.6	29.95	217.93	31.28	267.1	Cet
7 Nov 2016	01h47m37.81s	-01 42' 43.4"	2.8682	1.9323	7.6	156.4	7.9	29.49	219.19	30.80	267.8	Cet
8 Nov 2016	01h46m49.87s	-01 43' 07.3"	2.8676	1.9367	7.7	155.4	8.3	29.01	220.44	30.29	268.5	Cet
9 Nov 2016	01h46m02.66s	-01 43' 21.8"	2.8669	1.9414	7.7	154.4	8.6	28.53	221.67	29.76	269.3	Cet
10 Nov 2016	01h45m16.28s	-01 43' 26.5"	2.8662	1.9462	7.7	153.4	8.9	28.04	222.88	29.21	270.1	Cet
11 Nov 2016	01h44m30.79s	-01 43' 21.2"	2.8656	1.9514	7.7	152.4	9.2	27.54	224.09	28.64	270.9	Cet
12 Nov 2016	01h43m46.22s	-01 43' 05.9"	2.8649	1.9568	7.7	151.3	9.5	27.04	225.28	28.05	271.8	Cet
13 Nov 2016	01h43m02.61s	-01 42' 40.6"	2.8642	1.9624	7.8	150.3	9.9	26.53	226.45	27.44	272.7	Cet
14 Nov 2016	01h42m19.99s	-01 42' 05.3"	2.8636	1.9683	7.8	149.2	10.2	26.01	227.61	26.82	273.6	Cet
15 Nov 2016	01h41m38.41s	-01 41' 19.9"	2.8629	1.9745	7.8	148.2	10.5	25.49	228.76	26.18	274.7	Cet
16 Nov 2016	01h40m57.89s	-01 40' 24.5"	2.8622	1.9808	7.8	147.1	10.8	24.97	229.90	25.53	275.7	Cet
17 Nov 2016	01h40m18.47s	-01 39' 19.1"	2.8615	1.9874	7.8	146.1	11.1	24.43	231.02	24.88	276.8	Cet
18 Nov 2016	01h39m40.17s	-01 38' 03.6"	2.8609	1.9943	7.9	145.0	11.4	23.90	232.13	24.21	278.0	Cet
19 Nov 2016	01h39m03.03s	-01 36' 38.1"	2.8602	2.0013	7.9	144.0	11.7	23.36	233.23	23.54	279.3	Cet
20 Nov 2016	01h38m27.08s	-01 35' 02.7"	2.8595	2.0086	7.9	142.9	12.0	22.82	234.31	22.85	280.6	Cet
21 Nov 2016	01h37m52.34s	-01 33' 17.2"	2.8588	2.0161	7.9	141.8	12.3	22.28	235.39	22.17	282.0	Cet
22 Nov 2016	01h37m18.84s	-01 31' 21.8"	2.8581	2.0239	7.9	140.8	12.6	21.73	236.45	21.48	283.6	Cet
23 Nov 2016	01h36m46.62s	-01 29' 16.6"	2.8574	2.0318	7.9	139.7	12.9	21.18	237.49	20.80	285.2	Cet
24 Nov 2016	01h36m15.69s	-01 27' 01.5"	2.8568	2.0400	8.0	138.7	13.2	20.63	238.53	20.11	286.9	Cet
25 Nov 2016	01h35m46.07s	-01 24' 36.6"	2.8561	2.0483	8.0	137.6	13.5	20.08	239.56	19.44	288.8	Cet
26 Nov 2016	01h35m17.79s	-01 22' 02.0"	2.8554	2.0569	8.0	136.6	13.7	19.52	240.57	18.77	290.8	Cet
27 Nov 2016	01h34m50.86s	-01 19' 17.8"	2.8547	2.0656	8.0	135.5	14.0	18.97	241.58	18.12	293.0	Cet
28 Nov 2016	01h34m25.31s	-01 16' 24.0"	2.8540	2.0746	8.0	134.5	14.3	18.42	242.57	17.48	295.3	Cet
29 Nov 2016	01h34m01.15s	-01 13' 20.7"	2.8533	2.0837	8.1	133.4	14.5	17.86	243.56	16.86	297.8	Cet
30 Nov 2016	01h33m38.39s	-01 10' 08.0"	2.8526	2.0930	8.1	132.4	14.8	17.31	244.53	16.27	300.4	Cet
1 Dez 2016	01h33m17.05s	-01 06' 46.1"	2.8519	2.1025	8.1	131.4	15.0	16.75	245.50	15.70	303.3	Cet
2 Dez 2016	01h32m57.14s	-01 03' 15.0"	2.8512	2.1121	8.1	130.3	15.3	16.20	246.45	15.18	306.4	Cet
3 Dez 2016	01h32m38.66s	-00 59' 34.8"	2.8505	2.1220	8.1	129.3	15.5	15.65	247.40	14.69	309.7	Cet
4 Dez 2016	01h32m21.62s	-00 55' 45.7"	2.8498	2.1320	8.2	128.3	15.7	15.10	248.33	14.24	313.2	Cet
5 Dez 2016	01h32m06.04s	-00 51' 47.8"	2.8491	2.1421	8.2	127.3	16.0	14.55	249.26	13.85	316.9	Cet
6 Dez 2016	01h31m51.90s	-00 47' 41.2"	2.8484	2.1524	8.2	126.3	16.2	14.00	250.18	13.52	320.8	Cet
7 Dez 2016	01h31m39.22s	-00 43' 26.1"	2.8477	2.1629	8.2	125.3	16.4	13.45	251.09	13.24	324.8	Cet
8 Dez 2016	01h31m28.00s	-00 39' 02.5"	2.8470	2.1735	8.2	124.3	16.6	12.91	252.00	13.03	329.0	Cet
9 Dez 2016	01h31m18.23s	-00 34' 30.7"	2.8463	2.1843	8.2	123.3	16.8	12.37	252.89	12.88	333.3	Cet
10 Dez 2016	01h31m09.91s	-00 29' 50.7"	2.8456	2.1951	8.3	122.3	17.0	11.83	253.78	12.80	337.7	Cet
11 Dez 2016	01h31m03.03s	-00 25' 02.8"	2.8449	2.2061	8.3	121.3	17.2	11.29	254.67	12.80	342.0	Cet
12 Dez 2016	01h30m57.60s	-00 20' 07.0"	2.8442	2.2173	8.3	120.3	17.4	10.75	255.54	12.86	346.3	Cet
13 Dez 2016	01h30m53.61s	-00 15' 03.6"	2.8435	2.2285	8.3	119.3	17.6	10.22	256.41	12.99	350.5	Cet
14 Dez 2016	01h30m51.04s	-00 09' 52.6"	2.8428	2.2399	8.3	118.4	17.7	9.69	257.27	13.18	354.6	Cet
15 Dez 2016	01h30m49.89s	-00 04' 34.2"	2.8421	2.2514	8.3	117.4	17.9	9.17	258.13	13.43	358.6	Cet
16 Dez 2016	01h30m50.16s	+00 00' 51.3"	2.8414	2.2630	8.4	116.4	18.1	8.64	258.97	13.73	2.3	Cet
17 Dez 2016	01h30m51.84s	+00 06' 24.0"	2.8406	2.2747	8.4	115.5	18.2	8.13	259.82	14.09	5.9	Cet
18 Dez 2016	01h30m54.92s	+00 12' 03.7"	2.8399	2.2865	8.4	114.5	18.4	7.61	260.66	14.49	9.3	Cet
19 Dez 2016	01h30m59.40s	+00 17' 50.3"	2.8392	2.2985	8.4	113.6	18.5	7.10	261.49	14.93	12.4	Cet
20 Dez 2016	01h31m05.27s	+00 23' 43.6"	2.8385	2.3105	8.4	112.7	18.7	6.59	262.31	15.41	15.4	Cet
21 Dez 2016	01h31m12.51s	+00 29' 43.5"	2.8378	2.3226	8.4	111.7	18.8	6.08	263.14	15.92	18.1	Cet
22 Dez 2016	01h31m21.13s	+00 35' 49.8"	2.8370	2.3348	8.4	110.8	18.9	5.58	263.95	16.46	20.7	Cet
23 Dez 2016	01h31m31.11s	+00 42' 02.5"	2.8363	2.3470	8.5	109.9	19.0	5.08	264.77	17.02	23.1	Cet
24 Dez 2016	01h31m42.45s	+00 48' 21.4"	2.8356	2.3594	8.5	108.9	19.2	4.59	265.57	17.61	25.4	Cet
25 Dez 2016	01h31m55.14s	+00 54' 46.3"	2.8349	2.3718	8.5	108.0	19.3	4.10	266.38	18.21	27.4	Cet
26 Dez 2016	01h32m09.16s	+01 01' 17.2"	2.8342	2.3843	8.5	107.1	19.4	3.62	267.18	18.82	29.4	Cet

## Ephemeride des Kleinplaneten (1) Ceres

Datum	RA	Deklination	r	delta	mag	Elong	Phase	Höhe	Az.	Gesch.	PA	Stb
----	--	-----	-	-----	---	-----	-----	-----	-----	-----	---	---
27 Dez 2016	01h32m24.50s	+01 07' 53.9"	2.8334	2.3969	8.5	106.2	19.5	3.13	267.97	19.45	31.2	Cet
28 Dez 2016	01h32m41.16s	+01 14' 36.3"	2.8327	2.4095	8.5	105.3	19.6	2.66	268.76	20.08	32.8	Cet
29 Dez 2016	01h32m59.13s	+01 21' 24.2"	2.8320	2.4222	8.5	104.4	19.7	2.19	269.55	20.72	34.4	Cet
30 Dez 2016	01h33m18.38s	+01 28' 17.6"	2.8312	2.4350	8.6	103.5	19.7	1.72	270.33	21.37	35.8	Cet
31 Dez 2016	01h33m38.92s	+01 35' 16.2"	2.8305	2.4478	8.6	102.6	19.8	1.25	271.11	22.02	37.2	Cet
1 Jan 2017	01h34m00.71s	+01 42' 20.0"	2.8298	2.4606	8.6	101.8	19.9	0.80	271.89	22.68	38.5	Cet
2 Jan 2017	01h34m23.77s	+01 49' 28.8"	2.8291	2.4735	8.6	100.9	20.0	0.34	272.66	23.33	39.7	Cet
3 Jan 2017	01h34m48.05s	+01 56' 42.6"	2.8283	2.4864	8.6	100.0	20.0	-0.11	273.43	23.98	40.8	Cet
4 Jan 2017	01h35m13.56s	+02 04' 01.0"	2.8276	2.4994	8.6	99.1	20.1	-0.55	274.20	24.64	41.9	Cet
5 Jan 2017	01h35m40.28s	+02 11' 24.2"	2.8269	2.5124	8.6	98.3	20.1	-0.99	274.97	25.29	42.8	Cet
6 Jan 2017	01h36m08.19s	+02 18' 51.8"	2.8261	2.5254	8.7	97.4	20.2	-1.43	275.73	25.93	43.8	Cet
7 Jan 2017	01h36m37.28s	+02 26' 23.7"	2.8254	2.5385	8.7	96.6	20.2	-1.86	276.49	26.57	44.7	Cet
8 Jan 2017	01h37m07.52s	+02 34' 00.0"	2.8246	2.5516	8.7	95.7	20.3	-2.29	277.24	27.21	45.5	Cet
9 Jan 2017	01h37m38.91s	+02 41' 40.3"	2.8239	2.5647	8.7	94.9	20.3	-2.71	278.00	27.83	46.3	Psc
10 Jan 2017	01h38m11.43s	+02 49' 24.6"	2.8232	2.5778	8.7	94.1	20.3	-3.12	278.75	28.46	47.0	Psc
11 Jan 2017	01h38m45.06s	+02 57' 12.8"	2.8224	2.5909	8.7	93.2	20.4	-3.53	279.50	29.08	47.7	Psc
12 Jan 2017	01h39m19.79s	+03 05' 04.7"	2.8217	2.6041	8.7	92.4	20.4	-3.94	280.25	29.69	48.4	Psc
13 Jan 2017	01h39m55.60s	+03 13' 00.3"	2.8209	2.6172	8.7	91.6	20.4	-4.34	280.99	30.29	49.0	Psc
14 Jan 2017	01h40m32.48s	+03 20' 59.3"	2.8202	2.6304	8.7	90.7	20.4	-4.74	281.74	30.89	49.6	Psc
15 Jan 2017	01h41m10.41s	+03 29' 01.9"	2.8195	2.6435	8.8	89.9	20.4	-5.13	282.48	31.48	50.2	Psc
16 Jan 2017	01h41m49.40s	+03 37' 07.7"	2.8187	2.6567	8.8	89.1	20.4	-5.52	283.22	32.07	50.8	Psc
17 Jan 2017	01h42m29.41s	+03 45' 16.7"	2.8180	2.6698	8.8	88.3	20.4	-5.90	283.96	32.65	51.3	Psc
18 Jan 2017	01h43m10.44s	+03 53' 28.9"	2.8172	2.6830	8.8	87.5	20.4	-6.28	284.69	33.23	51.8	Psc
19 Jan 2017	01h43m52.48s	+04 01' 44.1"	2.8165	2.6961	8.8	86.7	20.4	-6.65	285.43	33.80	52.3	Psc
20 Jan 2017	01h44m35.51s	+04 10' 02.2"	2.8157	2.7093	8.8	85.9	20.4	-7.02	286.16	34.36	52.8	Psc
21 Jan 2017	01h45m19.53s	+04 18' 23.1"	2.8150	2.7224	8.8	85.1	20.4	-7.38	286.90	34.92	53.2	Psc
22 Jan 2017	01h46m04.52s	+04 26' 46.8"	2.8142	2.7355	8.8	84.3	20.4	-7.74	287.63	35.47	53.7	Psc
23 Jan 2017	01h46m50.48s	+04 35' 13.2"	2.8135	2.7486	8.8	83.5	20.3	-8.09	288.36	36.01	54.1	Psc
24 Jan 2017	01h47m37.38s	+04 43' 42.0"	2.8127	2.7617	8.8	82.8	20.3	-8.44	289.08	36.55	54.5	Psc
25 Jan 2017	01h48m25.22s	+04 52' 13.4"	2.8120	2.7747	8.8	82.0	20.3	-8.78	289.81	37.08	54.9	Psc
26 Jan 2017	01h49m13.98s	+05 00' 47.1"	2.8112	2.7877	8.9	81.2	20.3	-9.11	290.54	37.60	55.3	Psc
27 Jan 2017	01h50m03.66s	+05 09' 23.1"	2.8105	2.8007	8.9	80.5	20.2	-9.45	291.26	38.12	55.7	Psc
28 Jan 2017	01h50m54.23s	+05 18' 01.2"	2.8097	2.8137	8.9	79.7	20.2	-9.77	291.99	38.63	56.0	Psc
29 Jan 2017	01h51m45.70s	+05 26' 41.5"	2.8090	2.8266	8.9	78.9	20.1	-10.09	292.71	39.13	56.4	Psc
30 Jan 2017	01h52m38.05s	+05 35' 23.7"	2.8082	2.8395	8.9	78.2	20.1	-10.41	293.43	39.62	56.7	Psc
31 Jan 2017	01h53m31.25s	+05 44' 07.8"	2.8074	2.8524	8.9	77.4	20.0	-10.72	294.15	40.10	57.0	Psc
1 Feb 2017	01h54m25.31s	+05 52' 53.8"	2.8067	2.8652	8.9	76.7	20.0	-11.03	294.87	40.58	57.3	Psc