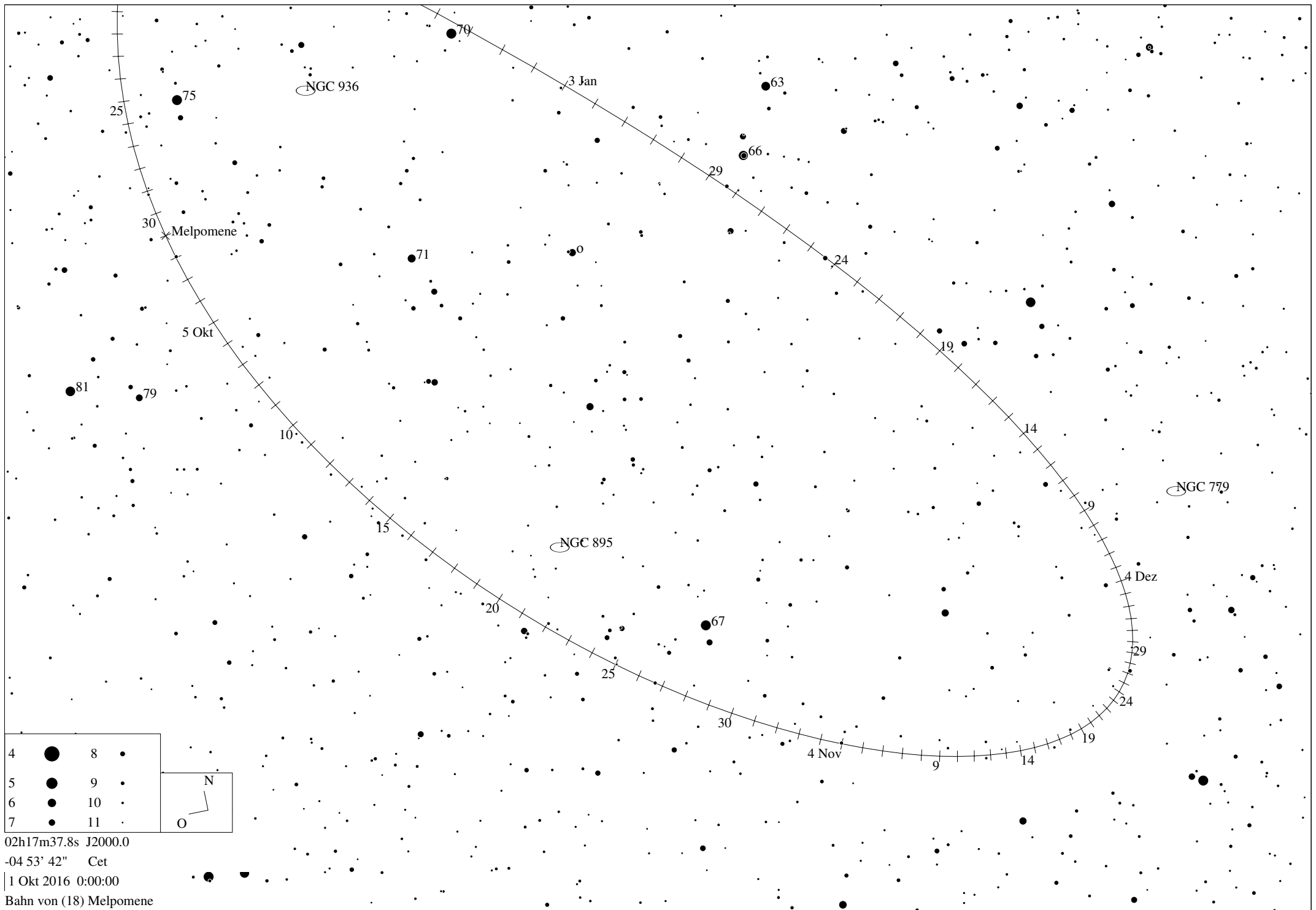


4	●	8	●
5	●	9	●
6	●	10	●
7	●	11	●

N

O

02h31m15.5s J2000.0
+01 29' 33" Cet
26 Aug 2016 0:00:00
Bahn von (18) Melpomene



02h17m37.8s J2000.0

-04 53' 42" Cet

| 1 Okt 2016 0:00:00

Bahn von (18) Melpomene

4



8



5



9



6



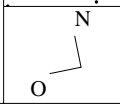
10



7



11



25

75

NGC 936

3 Jan

63

30

Melpomene

29

66

71

0

24

5 Okt

19

81

79

10

14

15

NGC 895

NGC 779

20

4 Dez

67

29

25

30

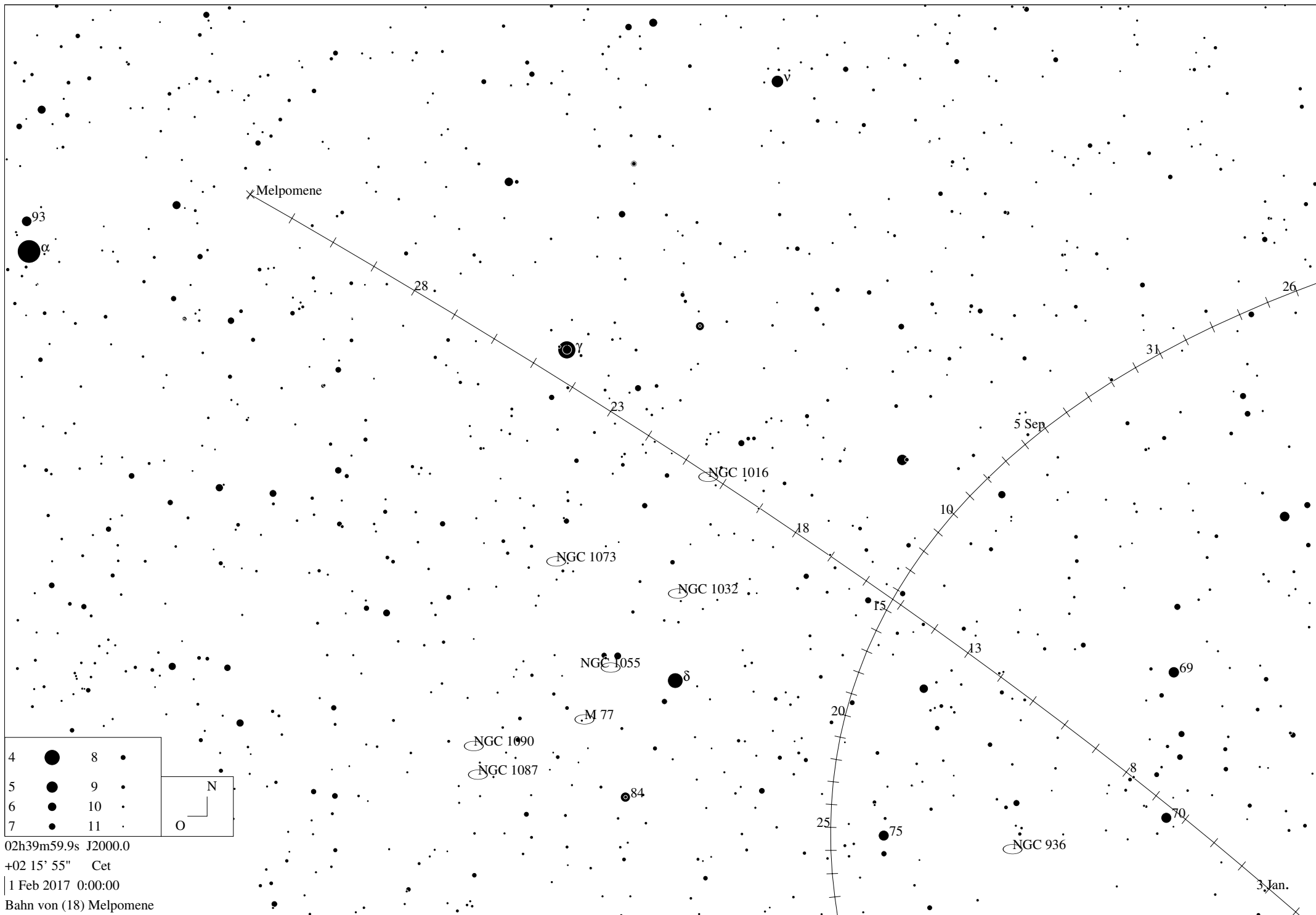
4 Nov

9

14

19

24



Melpomene

93

α

28

γ

23

NGC 1016

18

NGC 1073

NGC 1032

15

NGC 1055

δ

M 77

NGC 1090

NGC 1087

84

20

75

13

5 Sep

10

31

NGC 936

8

69

70

26

3 Jan.

Ephemeride des Kleinplaneten (18) Melpomene

Datum	RA	Deklination	r	delta	mag	Elong	Phase	Höhe	Az.	Gesch.	PA	Stb
1 Aug 2016	01h44m24.74s	+04 55' 00.8"	1.8234	1.3051	9.6	102.9	32.9	20.68	109.33	57.76	89.6	Psc
2 Aug 2016	01h45m58.06s	+04 55' 01.9"	1.8224	1.2954	9.6	103.5	32.8	21.03	109.84	57.17	90.2	Psc
3 Aug 2016	01h47m30.44s	+04 54' 49.6"	1.8213	1.2856	9.6	104.1	32.7	21.37	110.37	56.56	90.7	Psc
4 Aug 2016	01h49m01.86s	+04 54' 23.9"	1.8203	1.2760	9.6	104.7	32.6	21.71	110.90	55.95	91.3	Psc
5 Aug 2016	01h50m32.27s	+04 53' 44.7"	1.8193	1.2664	9.5	105.3	32.5	22.05	111.44	55.33	91.9	Psc
6 Aug 2016	01h52m01.68s	+04 52' 51.7"	1.8183	1.2568	9.5	105.9	32.4	22.39	111.99	54.69	92.5	Psc
7 Aug 2016	01h53m30.03s	+04 51' 44.8"	1.8173	1.2473	9.5	106.5	32.4	22.73	112.55	54.05	93.2	Psc
8 Aug 2016	01h54m57.33s	+04 50' 24.1"	1.8164	1.2379	9.5	107.1	32.2	23.07	113.11	53.40	93.9	Psc
9 Aug 2016	01h56m23.52s	+04 48' 49.2"	1.8154	1.2285	9.5	107.7	32.1	23.40	113.69	52.75	94.5	Psc
10 Aug 2016	01h57m48.60s	+04 47' 00.2"	1.8145	1.2192	9.4	108.4	32.0	23.73	114.27	52.08	95.3	Psc
11 Aug 2016	01h59m12.53s	+04 44' 56.9"	1.8136	1.2100	9.4	109.0	31.9	24.06	114.87	51.41	96.0	Psc
12 Aug 2016	02h00m35.29s	+04 42' 39.2"	1.8127	1.2008	9.4	109.6	31.8	24.38	115.47	50.73	96.8	Psc
13 Aug 2016	02h01m56.85s	+04 40' 07.0"	1.8118	1.1917	9.4	110.3	31.6	24.70	116.08	50.04	97.6	Psc
14 Aug 2016	02h03m17.18s	+04 37' 20.2"	1.8110	1.1826	9.4	110.9	31.5	25.03	116.71	49.35	98.4	Psc
15 Aug 2016	02h04m36.26s	+04 34' 18.8"	1.8102	1.1736	9.3	111.6	31.4	25.34	117.34	48.64	99.2	Psc
16 Aug 2016	02h05m54.05s	+04 31' 02.6"	1.8094	1.1647	9.3	112.2	31.2	25.66	117.99	47.94	100.1	Psc
17 Aug 2016	02h07m10.53s	+04 27' 31.6"	1.8086	1.1558	9.3	112.9	31.0	25.97	118.64	47.22	101.0	Cet
18 Aug 2016	02h08m25.66s	+04 23' 45.7"	1.8078	1.1471	9.3	113.5	30.9	26.28	119.31	46.50	102.0	Cet
19 Aug 2016	02h09m39.41s	+04 19' 44.8"	1.8070	1.1383	9.2	114.2	30.7	26.59	119.98	45.78	103.0	Cet
20 Aug 2016	02h10m51.76s	+04 15' 28.8"	1.8063	1.1297	9.2	114.9	30.5	26.89	120.67	45.05	104.0	Cet
21 Aug 2016	02h12m02.65s	+04 10' 57.7"	1.8056	1.1211	9.2	115.6	30.4	27.19	121.37	44.31	105.1	Cet
22 Aug 2016	02h13m12.07s	+04 06' 11.3"	1.8049	1.1127	9.2	116.3	30.2	27.49	122.09	43.57	106.3	Cet
23 Aug 2016	02h14m19.97s	+04 01' 09.7"	1.8042	1.1043	9.2	117.0	30.0	27.78	122.81	42.83	107.4	Cet
24 Aug 2016	02h15m26.30s	+03 55' 52.7"	1.8036	1.0959	9.1	117.7	29.8	28.07	123.55	42.08	108.7	Cet
25 Aug 2016	02h16m31.05s	+03 50' 20.4"	1.8029	1.0877	9.1	118.4	29.6	28.36	124.30	41.33	110.0	Cet
26 Aug 2016	02h17m34.15s	+03 44' 32.6"	1.8023	1.0795	9.1	119.1	29.3	28.64	125.06	40.57	111.3	Cet
27 Aug 2016	02h18m35.59s	+03 38' 29.5"	1.8017	1.0714	9.1	119.8	29.1	28.92	125.84	39.83	112.8	Cet
28 Aug 2016	02h19m35.32s	+03 32' 10.9"	1.8011	1.0634	9.0	120.6	28.9	29.20	126.63	39.08	114.3	Cet
29 Aug 2016	02h20m33.30s	+03 25' 36.9"	1.8006	1.0555	9.0	121.3	28.6	29.47	127.43	38.35	115.8	Cet
30 Aug 2016	02h21m29.50s	+03 18' 47.6"	1.8000	1.0477	9.0	122.1	28.4	29.74	128.25	37.62	117.5	Cet
31 Aug 2016	02h22m23.90s	+03 11' 42.9"	1.7995	1.0400	9.0	122.8	28.1	30.00	129.08	36.90	119.2	Cet
1 Sep 2016	02h23m16.44s	+03 04' 23.1"	1.7990	1.0324	8.9	123.6	27.9	30.25	129.92	36.20	120.9	Cet
2 Sep 2016	02h24m07.12s	+02 56' 48.3"	1.7985	1.0249	8.9	124.3	27.6	30.51	130.78	35.52	122.8	Cet
3 Sep 2016	02h24m55.89s	+02 48' 58.4"	1.7980	1.0175	8.9	125.1	27.3	30.75	131.66	34.86	124.7	Cet
4 Sep 2016	02h25m42.72s	+02 40' 53.8"	1.7976	1.0102	8.9	125.9	27.0	31.00	132.55	34.22	126.8	Cet
5 Sep 2016	02h26m27.60s	+02 32' 34.5"	1.7972	1.0030	8.9	126.7	26.8	31.23	133.45	33.61	128.9	Cet
6 Sep 2016	02h27m10.50s	+02 24' 00.7"	1.7968	0.9959	8.8	127.4	26.5	31.46	134.37	33.02	131.1	Cet
7 Sep 2016	02h27m51.39s	+02 15' 12.7"	1.7964	0.9889	8.8	128.2	26.1	31.69	135.31	32.47	133.3	Cet
8 Sep 2016	02h28m30.24s	+02 06' 10.7"	1.7960	0.9820	8.8	129.0	25.8	31.91	136.26	31.96	135.7	Cet
9 Sep 2016	02h29m07.04s	+01 56' 54.9"	1.7957	0.9753	8.8	129.8	25.5	32.12	137.22	31.48	138.1	Cet
10 Sep 2016	02h29m41.75s	+01 47' 25.5"	1.7954	0.9687	8.7	130.7	25.2	32.32	138.21	31.04	140.6	Cet
11 Sep 2016	02h30m14.37s	+01 37' 43.0"	1.7950	0.9621	8.7	131.5	24.8	32.52	139.20	30.65	143.2	Cet
12 Sep 2016	02h30m44.88s	+01 27' 47.6"	1.7948	0.9558	8.7	132.3	24.5	32.71	140.22	30.30	145.8	Cet
13 Sep 2016	02h31m13.24s	+01 17' 39.7"	1.7945	0.9495	8.7	133.1	24.2	32.89	141.24	30.00	148.5	Cet
14 Sep 2016	02h31m39.45s	+01 07' 19.5"	1.7943	0.9434	8.6	134.0	23.8	33.07	142.29	29.75	151.3	Cet
15 Sep 2016	02h32m03.49s	+00 56' 47.5"	1.7940	0.9374	8.6	134.8	23.4	33.24	143.35	29.55	154.1	Cet
16 Sep 2016	02h32m25.35s	+00 46' 04.1"	1.7938	0.9315	8.6	135.7	23.1	33.39	144.42	29.40	156.9	Cet
17 Sep 2016	02h32m45.00s	+00 35' 09.6"	1.7936	0.9258	8.6	136.5	22.7	33.54	145.51	29.30	159.8	Cet
18 Sep 2016	02h33m02.43s	+00 24' 04.6"	1.7935	0.9202	8.5	137.4	22.3	33.68	146.62	29.26	162.7	Cet
19 Sep 2016	02h33m17.62s	+00 12' 49.5"	1.7933	0.9147	8.5	138.2	21.9	33.82	147.74	29.27	165.6	Cet
20 Sep 2016	02h33m30.57s	+00 01' 24.7"	1.7932	0.9094	8.5	139.1	21.5	33.94	148.88	29.33	168.4	Cet
21 Sep 2016	02h33m41.25s	-00 10' 09.0"	1.7931	0.9043	8.5	139.9	21.1	34.05	150.03	29.44	171.3	Cet
22 Sep 2016	02h33m49.67s	-00 21' 51.4"	1.7930	0.8992	8.4	140.8	20.7	34.15	151.19	29.60	174.2	Cet
23 Sep 2016	02h33m55.82s	-00 33' 41.7"	1.7930	0.8944	8.4	141.7	20.3	34.24	152.37	29.80	177.0	Cet
24 Sep 2016	02h33m59.69s	-00 45' 39.3"	1.7929	0.8897	8.4	142.5	19.9	34.32	153.57	30.05	179.8	Cet
25 Sep 2016	02h34m01.28s	-00 57' 43.5"	1.7929	0.8851	8.4	143.4	19.5	34.39	154.78	30.34	182.5	Cet
26 Sep 2016	02h34m00.61s	-01 09' 53.6"	1.7929	0.8807	8.4	144.3	19.1	34.45	156.00	30.67	185.1	Cet
27 Sep 2016	02h33m57.69s	-01 22' 08.8"	1.7929	0.8765	8.3	145.1	18.6	34.50	157.23	31.02	187.7	Cet
28 Sep 2016	02h33m52.53s	-01 34' 28.3"	1.7929	0.8724	8.3	146.0	18.2	34.53	158.48	31.40	190.2	Cet
29 Sep 2016	02h33m45.16s	-01 46' 51.3"	1.7930	0.8685	8.3	146.9	17.8	34.55	159.74	31.80	192.6	Cet
30 Sep 2016	02h33m35.60s	-01 59' 16.9"	1.7931	0.8648	8.3	147.7	17.4	34.56	161.01	32.21	194.9	Cet
1 Okt 2016	02h33m23.88s	-02 11' 44.3"	1.7932	0.8612	8.2	148.6	16.9	34.56	162.29	32.63	197.2	Cet
2 Okt 2016	02h33m10.04s	-02 24' 12.6"	1.7933	0.8578	8.2	149.4	16.5	34.54	163.58	33.06	199.4	Cet
3 Okt 2016	02h32m54.12s	-02 36' 40.7"	1.7934	0.8546	8.2	150.2	16.1	34.52	164.88	33.49	201.5	Cet
4 Okt 2016	02h32m36.16s	-02 49' 07.8"	1.7936	0.8516	8.2	151.1	15.7	34.47	166.19	33.91	203.5	Cet
5 Okt 2016	02h32m16.21s	-03 01' 32.9"	1.7938	0.8488	8.2	151.9	15.2	34.42	167.50	34.32	205.5	Cet
6 Okt 2016	02h31m54.33s	-03 13' 54.9"	1.7940	0.8462	8.1	152.7	14.8	34.35	168.83	34.72	207.3	Cet
7 Okt 2016	02h31m30.57s	-03 26' 13.0"	1.7942	0.8437	8.1	153.4	14.4	34.27	170.16	35.10	209.2	Cet
8 Okt 2016	02h31m04.99s	-03 38' 26.0"	1.7944	0.8414	8.1	154.2	14.0	34.17	171.49	35.46	210.9	Cet
9 Okt 2016	02h30m37.65s	-03 50' 33.0"	1.7947	0.8394	8.1	154.9	13.7	34.07	172.84	35.79	212.6	Cet
10 Okt 2016	02h30m08.62s	-04 02' 33.0"	1.7950	0.8375	8.1	155.6	13.3	33.94	174.18	36.09	214.3	Cet
11 Okt 2016	02h29m37.97s	-04 14' 24.9"	1.7953	0.8358	8.1	156.3	12.9	33.81	175.53	36.36	215.9	Cet
12 Okt 2016	02h29m05.78s	-04 26' 07.8"	1.7956	0.8343	8.0	156.9	12.6	33.66	176.88	36.60	217.4	Cet
13 Okt 2016	02h28m32.11s	-04 37' 40.6"	1.7959	0.8330	8.0	157.5	12.3	33.50	178.24	36.80	218.9	Cet

Ephemeride des Kleinplaneten (18) Melpomene

Datum	RA	Deklination	r	delta	mag	Elong	Phase	Höhe	Az.	Gesch.	PA	Stb
14 Okt 2016	02h27m57.05s	-04 49' 02.4"	1.7963	0.8319	8.0	158.1	12.0	33.32	179.59	36.96	220.4	Cet
15 Okt 2016	02h27m20.68s	-05 00' 12.3"	1.7966	0.8311	8.0	158.6	11.7	33.13	180.94	37.08	221.9	Cet
16 Okt 2016	02h26m43.06s	-05 11' 09.2"	1.7970	0.8304	8.0	159.1	11.4	32.93	182.30	37.16	223.3	Cet
17 Okt 2016	02h26m04.29s	-05 21' 52.3"	1.7975	0.8299	8.0	159.5	11.2	32.71	183.65	37.20	224.7	Cet
18 Okt 2016	02h25m24.45s	-05 32' 20.6"	1.7979	0.8296	8.0	159.8	11.0	32.49	185.00	37.20	226.1	Cet
19 Okt 2016	02h24m43.62s	-05 42' 33.3"	1.7984	0.8295	8.0	160.1	10.9	32.25	186.35	37.15	227.4	Cet
20 Okt 2016	02h24m01.90s	-05 52' 29.4"	1.7988	0.8296	8.0	160.4	10.7	31.99	187.69	37.06	228.8	Cet
21 Okt 2016	02h23m19.36s	-06 02' 08.1"	1.7993	0.8300	8.0	160.5	10.6	31.73	189.03	36.92	230.1	Cet
22 Okt 2016	02h22m36.11s	-06 11' 28.5"	1.7998	0.8305	8.0	160.6	10.6	31.45	190.36	36.73	231.4	Cet
23 Okt 2016	02h21m52.25s	-06 20' 29.9"	1.8004	0.8312	8.0	160.7	10.5	31.17	191.69	36.48	232.8	Cet
24 Okt 2016	02h21m07.88s	-06 29' 11.3"	1.8009	0.8322	8.0	160.6	10.6	30.87	193.02	36.19	234.1	Cet
25 Okt 2016	02h20m23.10s	-06 37' 32.0"	1.8015	0.8333	8.0	160.5	10.6	30.56	194.33	35.84	235.4	Cet
26 Okt 2016	02h19m38.02s	-06 45' 31.4"	1.8021	0.8347	8.0	160.3	10.7	30.24	195.64	35.44	236.8	Cet
27 Okt 2016	02h18m52.75s	-06 53' 08.7"	1.8027	0.8362	8.0	160.1	10.8	29.91	196.94	34.98	238.1	Cet
28 Okt 2016	02h18m07.40s	-07 00' 23.2"	1.8034	0.8380	8.0	159.8	11.0	29.58	198.24	34.48	239.5	Cet
29 Okt 2016	02h17m22.06s	-07 07' 14.4"	1.8040	0.8400	8.0	159.4	11.2	29.23	199.52	33.92	240.8	Cet
30 Okt 2016	02h16m36.87s	-07 13' 41.7"	1.8047	0.8421	8.0	159.0	11.4	28.88	200.80	33.31	242.2	Cet
31 Okt 2016	02h15m51.91s	-07 19' 44.7"	1.8054	0.8445	8.0	158.5	11.6	28.51	202.06	32.66	243.7	Cet
1 Nov 2016	02h15m07.30s	-07 25' 22.9"	1.8061	0.8471	8.1	158.0	11.9	28.14	203.32	31.96	245.1	Cet
2 Nov 2016	02h14m23.13s	-07 30' 36.0"	1.8068	0.8499	8.1	157.4	12.2	27.77	204.57	31.21	246.6	Cet
3 Nov 2016	02h13m39.53s	-07 35' 23.6"	1.8076	0.8529	8.1	156.8	12.5	27.39	205.80	30.43	248.2	Cet
4 Nov 2016	02h12m56.57s	-07 39' 45.5"	1.8083	0.8561	8.1	156.2	12.8	27.00	207.03	29.61	249.8	Cet
5 Nov 2016	02h12m14.36s	-07 43' 41.4"	1.8091	0.8595	8.1	155.5	13.1	26.60	208.24	28.76	251.5	Cet
6 Nov 2016	02h11m33.00s	-07 47' 11.2"	1.8099	0.8630	8.2	154.8	13.5	26.20	209.44	27.87	253.2	Cet
7 Nov 2016	02h10m52.56s	-07 50' 14.8"	1.8107	0.8668	8.2	154.1	13.8	25.80	210.63	26.97	255.1	Cet
8 Nov 2016	02h10m13.36s	-07 52' 50.5"	1.8116	0.8708	8.2	153.3	14.2	25.39	211.81	26.04	257.0	Cet
9 Nov 2016	02h09m35.03s	-07 55' 01.6"	1.8124	0.8749	8.2	152.6	14.6	24.98	212.98	25.10	259.1	Cet
10 Nov 2016	02h08m57.88s	-07 56' 46.7"	1.8133	0.8793	8.3	151.8	15.0	24.56	214.14	24.14	261.2	Cet
11 Nov 2016	02h08m21.97s	-07 58' 05.6"	1.8142	0.8838	8.3	151.0	15.4	24.14	215.28	23.19	263.6	Cet
12 Nov 2016	02h07m47.38s	-07 58' 58.7"	1.8151	0.8885	8.3	150.2	15.7	23.72	216.42	22.23	266.1	Cet
13 Nov 2016	02h07m14.17s	-07 59' 26.1"	1.8161	0.8934	8.3	149.3	16.1	23.30	217.54	21.29	268.8	Cet
14 Nov 2016	02h06m42.38s	-07 59' 28.0"	1.8170	0.8984	8.4	148.5	16.5	22.87	218.65	20.36	271.7	Cet
15 Nov 2016	02h06m12.08s	-07 59' 04.7"	1.8180	0.9037	8.4	147.6	16.9	22.44	219.75	19.46	274.9	Cet
16 Nov 2016	02h05m43.31s	-07 58' 16.5"	1.8190	0.9091	8.4	146.8	17.3	22.01	220.84	18.60	278.3	Cet
17 Nov 2016	02h05m16.12s	-07 57' 03.6"	1.8200	0.9147	8.4	145.9	17.7	21.59	221.92	17.77	282.1	Cet
18 Nov 2016	02h04m50.55s	-07 55' 26.3"	1.8210	0.9204	8.5	145.1	18.1	21.16	222.99	17.01	286.1	Cet
19 Nov 2016	02h04m26.65s	-07 53' 25.1"	1.8221	0.9263	8.5	144.2	18.5	20.73	224.04	16.30	290.6	Cet
20 Nov 2016	02h04m04.46s	-07 51' 00.2"	1.8231	0.9324	8.5	143.3	18.9	20.30	225.09	15.67	295.3	Cet
21 Nov 2016	02h03m44.02s	-07 48' 11.9"	1.8242	0.9386	8.5	142.5	19.3	19.87	226.12	15.13	300.4	Cet
22 Nov 2016	02h03m25.36s	-07 45' 00.8"	1.8253	0.9450	8.6	141.6	19.6	19.44	227.14	14.69	305.9	Cet
23 Nov 2016	02h03m08.53s	-07 41' 27.0"	1.8264	0.9516	8.6	140.7	20.0	19.01	228.16	14.36	311.6	Cet
24 Nov 2016	02h02m53.54s	-07 37' 31.2"	1.8275	0.9583	8.6	139.9	20.4	18.58	229.16	14.16	317.6	Cet
25 Nov 2016	02h02m40.43s	-07 33' 13.7"	1.8287	0.9652	8.6	139.0	20.7	18.16	230.15	14.09	323.6	Cet
26 Nov 2016	02h02m29.22s	-07 28' 35.0"	1.8298	0.9722	8.7	138.1	21.1	17.73	231.13	14.16	329.7	Cet
27 Nov 2016	02h02m19.94s	-07 23' 35.5"	1.8310	0.9793	8.7	137.3	21.4	17.31	232.11	14.35	335.7	Cet
28 Nov 2016	02h02m12.60s	-07 18' 15.7"	1.8322	0.9866	8.7	136.4	21.8	16.89	233.07	14.68	341.4	Cet
29 Nov 2016	02h02m07.22s	-07 12' 36.1"	1.8334	0.9941	8.8	135.6	22.1	16.47	234.02	15.12	346.9	Cet
30 Nov 2016	02h02m03.81s	-07 06' 37.2"	1.8347	1.0017	8.8	134.7	22.5	16.05	234.97	15.67	352.0	Cet
1 Dez 2016	02h02m02.38s	-07 00' 19.5"	1.8359	1.0094	8.8	133.9	22.8	15.64	235.90	16.31	356.7	Cet
2 Dez 2016	02h02m02.93s	-06 53' 43.6"	1.8372	1.0173	8.8	133.0	23.1	15.23	236.83	17.04	1.1	Cet
3 Dez 2016	02h02m05.47s	-06 46' 49.8"	1.8385	1.0253	8.9	132.2	23.4	14.82	237.74	17.83	5.1	Cet
4 Dez 2016	02h02m10.00s	-06 39' 38.9"	1.8398	1.0334	8.9	131.3	23.7	14.42	238.65	18.68	8.8	Cet
5 Dez 2016	02h02m16.51s	-06 32' 11.3"	1.8411	1.0416	8.9	130.5	24.0	14.02	239.55	19.58	12.1	Cet
6 Dez 2016	02h02m25.00s	-06 24' 27.4"	1.8424	1.0500	8.9	129.7	24.3	13.62	240.44	20.52	15.1	Cet
7 Dez 2016	02h02m35.46s	-06 16' 28.0"	1.8438	1.0585	9.0	128.9	24.6	13.22	241.33	21.48	17.9	Cet
8 Dez 2016	02h02m47.88s	-06 08' 13.4"	1.8451	1.0671	9.0	128.0	24.9	12.83	242.20	22.47	20.4	Cet
9 Dez 2016	02h03m02.24s	-05 59' 44.3"	1.8465	1.0758	9.0	127.2	25.1	12.44	243.07	23.47	22.7	Cet
10 Dez 2016	02h03m18.53s	-05 51' 01.1"	1.8479	1.0847	9.0	126.4	25.4	12.06	243.93	24.49	24.8	Cet
11 Dez 2016	02h03m36.73s	-05 42' 04.3"	1.8493	1.0936	9.1	125.6	25.6	11.67	244.78	25.51	26.8	Cet
12 Dez 2016	02h03m56.81s	-05 32' 54.5"	1.8508	1.1027	9.1	124.8	25.9	11.30	245.63	26.53	28.6	Cet
13 Dez 2016	02h04m18.76s	-05 23' 32.2"	1.8522	1.1118	9.1	124.0	26.1	10.92	246.46	27.55	30.2	Cet
14 Dez 2016	02h04m42.56s	-05 13' 57.8"	1.8537	1.1211	9.2	123.3	26.4	10.55	247.30	28.57	31.8	Cet
15 Dez 2016	02h05m08.18s	-05 04' 11.8"	1.8551	1.1304	9.2	122.5	26.6	10.18	248.12	29.59	33.2	Cet
16 Dez 2016	02h05m35.60s	-04 54' 14.7"	1.8566	1.1399	9.2	121.7	26.8	9.82	248.94	30.60	34.5	Cet
17 Dez 2016	02h06m04.80s	-04 44' 06.8"	1.8581	1.1495	9.2	120.9	27.0	9.46	249.75	31.60	35.7	Cet
18 Dez 2016	02h06m35.76s	-04 33' 48.7"	1.8597	1.1591	9.3	120.2	27.2	9.10	250.55	32.60	36.9	Cet
19 Dez 2016	02h07m08.46s	-04 23' 20.6"	1.8612	1.1689	9.3	119.4	27.4	8.75	251.35	33.59	38.0	Cet
20 Dez 2016	02h07m42.89s	-04 12' 43.1"	1.8627	1.1787	9.3	118.7	27.6	8.40	252.14	34.57	39.0	Cet
21 Dez 2016	02h08m19.02s	-04 01' 56.4"	1.8643	1.1887	9.3	117.9	27.8	8.05	252.93	35.54	40.0	Cet
22 Dez 2016	02h08m56.83s	-03 51' 01.0"	1.8659	1.1987	9.4	117.2	28.0	7.71	253.71	36.50	40.9	Cet
23 Dez 2016	02h09m36.32s	-03 39' 57.3"	1.8675	1.2088	9.4	116.4	28.1	7.37	254.49	37.45	41.8	Cet
24 Dez 2016	02h10m17.44s	-03 28' 45.7"	1.8691	1.2190	9.4	115.7	28.3	7.03	255.26	38.38	42.7	Cet
25 Dez 2016	02h11m00.20s	-03 17' 26.4"	1.8707	1.2293	9.4	115.0	28.5	6.70	256.02	39.31	43.5	Cet
26 Dez 2016	02h11m44.55s	-03 06' 00.0"	1.8724	1.2397	9.5	114.3	28.6	6.38	256.78	40.22	44.2	Cet

Ephemeride des Kleinplaneten (18) Melpomene

Datum	RA	Deklination	r	delta	mag	Elong	Phase	Höhe	Az.	Gesch.	PA	Stb
----	--	-----	-	-----	---	-----	-----	-----	-----	-----	-----	-----
27 Dez 2016	02h12m30.50s	-02 54' 26.6"	1.8740	1.2501	9.5	113.5	28.8	6.05	257.53	41.12	45.0	Cet
28 Dez 2016	02h13m18.00s	-02 42' 46.8"	1.8757	1.2606	9.5	112.8	28.9	5.73	258.28	42.01	45.7	Cet
29 Dez 2016	02h14m07.05s	-02 31' 00.8"	1.8774	1.2712	9.5	112.1	29.0	5.42	259.02	42.88	46.4	Cet
30 Dez 2016	02h14m57.62s	-02 19' 08.9"	1.8790	1.2819	9.5	111.4	29.2	5.10	259.76	43.74	47.0	Cet
31 Dez 2016	02h15m49.69s	-02 07' 11.6"	1.8808	1.2926	9.6	110.7	29.3	4.80	260.50	44.59	47.6	Cet
1 Jan 2017	02h16m43.23s	-01 55' 09.1"	1.8825	1.3035	9.6	110.0	29.4	4.49	261.23	45.41	48.2	Cet
2 Jan 2017	02h17m38.22s	-01 43' 01.8"	1.8842	1.3144	9.6	109.3	29.5	4.19	261.95	46.23	48.8	Cet
3 Jan 2017	02h18m34.63s	-01 30' 50.0"	1.8860	1.3253	9.6	108.6	29.6	3.89	262.67	47.02	49.4	Cet
4 Jan 2017	02h19m32.45s	-01 18' 34.0"	1.8877	1.3363	9.7	108.0	29.7	3.60	263.38	47.80	49.9	Cet
5 Jan 2017	02h20m31.65s	-01 06' 14.1"	1.8895	1.3474	9.7	107.3	29.8	3.31	264.09	48.57	50.4	Cet
6 Jan 2017	02h21m32.20s	-00 53' 50.7"	1.8913	1.3585	9.7	106.6	29.9	3.02	264.80	49.31	51.0	Cet
7 Jan 2017	02h22m34.07s	-00 41' 24.0"	1.8931	1.3697	9.7	106.0	30.0	2.74	265.50	50.04	51.4	Cet
8 Jan 2017	02h23m37.25s	-00 28' 54.3"	1.8949	1.3810	9.7	105.3	30.0	2.46	266.20	50.76	51.9	Cet
9 Jan 2017	02h24m41.69s	-00 16' 21.9"	1.8967	1.3923	9.8	104.6	30.1	2.18	266.90	51.45	52.4	Cet
10 Jan 2017	02h25m47.39s	-00 03' 47.1"	1.8985	1.4037	9.8	104.0	30.2	1.91	267.59	52.13	52.8	Cet
11 Jan 2017	02h26m54.30s	+00 08' 49.7"	1.9004	1.4151	9.8	103.3	30.2	1.64	268.27	52.79	53.3	Cet
12 Jan 2017	02h28m02.42s	+00 21' 28.6"	1.9023	1.4266	9.8	102.7	30.3	1.37	268.95	53.44	53.7	Cet
13 Jan 2017	02h29m11.71s	+00 34' 09.2"	1.9041	1.4381	9.9	102.0	30.3	1.11	269.63	54.07	54.1	Cet
14 Jan 2017	02h30m22.16s	+00 46' 51.2"	1.9060	1.4496	9.9	101.4	30.4	0.85	270.31	54.69	54.5	Cet
15 Jan 2017	02h31m33.74s	+00 59' 34.4"	1.9079	1.4613	9.9	100.8	30.4	0.59	270.98	55.30	54.9	Cet
16 Jan 2017	02h32m46.45s	+01 12' 18.6"	1.9098	1.4729	9.9	100.1	30.5	0.33	271.65	55.89	55.3	Cet
17 Jan 2017	02h34m00.25s	+01 25' 03.7"	1.9117	1.4847	9.9	99.5	30.5	0.08	272.31	56.47	55.6	Cet
18 Jan 2017	02h35m15.13s	+01 37' 49.3"	1.9137	1.4964	10.0	98.9	30.5	-0.16	272.97	57.04	56.0	Cet
19 Jan 2017	02h36m31.09s	+01 50' 35.4"	1.9156	1.5082	10.0	98.3	30.6	-0.41	273.63	57.60	56.4	Cet
20 Jan 2017	02h37m48.09s	+02 03' 21.6"	1.9176	1.5201	10.0	97.6	30.6	-0.65	274.29	58.15	56.7	Cet
21 Jan 2017	02h39m06.13s	+02 16' 07.9"	1.9195	1.5320	10.0	97.0	30.6	-0.89	274.94	58.68	57.1	Cet
22 Jan 2017	02h40m25.18s	+02 28' 54.1"	1.9215	1.5439	10.0	96.4	30.6	-1.12	275.58	59.21	57.4	Cet
23 Jan 2017	02h41m45.25s	+02 41' 39.9"	1.9235	1.5559	10.1	95.8	30.6	-1.35	276.23	59.72	57.8	Cet
24 Jan 2017	02h43m06.30s	+02 54' 25.1"	1.9255	1.5679	10.1	95.2	30.6	-1.58	276.87	60.22	58.1	Cet
25 Jan 2017	02h44m28.32s	+03 07' 09.6"	1.9275	1.5799	10.1	94.6	30.6	-1.81	277.51	60.72	58.4	Cet
26 Jan 2017	02h45m51.30s	+03 19' 53.3"	1.9295	1.5920	10.1	94.0	30.6	-2.03	278.14	61.20	58.8	Cet
27 Jan 2017	02h47m15.23s	+03 32' 35.9"	1.9316	1.6041	10.1	93.4	30.6	-2.25	278.77	61.67	59.1	Cet
28 Jan 2017	02h48m40.09s	+03 45' 17.2"	1.9336	1.6163	10.1	92.8	30.6	-2.47	279.40	62.13	59.4	Cet
29 Jan 2017	02h50m05.86s	+03 57' 57.2"	1.9357	1.6284	10.2	92.2	30.6	-2.68	280.03	62.58	59.7	Cet
30 Jan 2017	02h51m32.52s	+04 10' 35.5"	1.9377	1.6406	10.2	91.6	30.5	-2.90	280.65	63.01	60.0	Cet
31 Jan 2017	02h53m00.07s	+04 23' 12.1"	1.9398	1.6529	10.2	91.1	30.5	-3.10	281.27	63.44	60.3	Cet
1 Feb 2017	02h54m28.49s	+04 35' 46.8"	1.9419	1.6651	10.2	90.5	30.5	-3.31	281.89	63.85	60.6	Cet