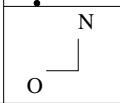


4	●	8	●
5	●	9	●
6	●	10	●
7	●	11	●



08h44m02.6s J2000.0

+18°00'19" Cnc

1 Jan 2018 0:00:00

Bahn von (11) Parthenope

Ephemeride des Kleinplaneten (11) Parthenope

Datum	RA	Deklination	r	delta	mag	Elong	Phase	Höhe	Az.	Gesch.	PA	Stb
----	--	-----	-	-----	---	-----	-----	-----	-----	-----	-----	-----
1 Jan 2018	08h57m26.51s	+16 38' 16.7"	2.6799	1.7936	10.7	148.2	11.1	51.20	148.24	25.73	293.6	Cnc
2 Jan 2018	08h56m47.73s	+16 42' 26.3"	2.6803	1.7868	10.6	149.4	10.8	51.63	149.86	26.64	293.4	Cnc
3 Jan 2018	08h56m07.49s	+16 46' 42.2"	2.6806	1.7803	10.6	150.6	10.4	52.05	151.52	27.53	293.2	Cnc
4 Jan 2018	08h55m25.82s	+16 51' 04.4"	2.6810	1.7740	10.6	151.8	10.0	52.45	153.22	28.40	293.0	Cnc
5 Jan 2018	08h54m42.77s	+16 55' 32.5"	2.6814	1.7679	10.6	153.0	9.6	52.83	154.95	29.25	292.8	Cnc
6 Jan 2018	08h53m58.35s	+17 00' 06.3"	2.6818	1.7621	10.5	154.2	9.2	53.20	156.71	30.07	292.6	Cnc
7 Jan 2018	08h53m12.61s	+17 04' 45.6"	2.6821	1.7566	10.5	155.4	8.8	53.55	158.50	30.87	292.4	Cnc
8 Jan 2018	08h52m25.59s	+17 09' 30.1"	2.6825	1.7513	10.5	156.6	8.4	53.89	160.33	31.64	292.3	Cnc
9 Jan 2018	08h51m37.32s	+17 14' 19.5"	2.6829	1.7462	10.5	157.9	7.9	54.20	162.19	32.37	292.1	Cnc
10 Jan 2018	08h50m47.86s	+17 19' 13.5"	2.6832	1.7415	10.4	159.1	7.5	54.49	164.09	33.08	291.9	Cnc
11 Jan 2018	08h49m57.25s	+17 24' 11.9"	2.6836	1.7370	10.4	160.3	7.1	54.77	166.01	33.75	291.8	Cnc
12 Jan 2018	08h49m05.55s	+17 29' 14.2"	2.6839	1.7328	10.4	161.6	6.7	55.02	167.96	34.39	291.6	Cnc
13 Jan 2018	08h48m12.81s	+17 34' 20.3"	2.6843	1.7288	10.4	162.8	6.2	55.24	169.93	34.99	291.5	Cnc
14 Jan 2018	08h47m19.08s	+17 39' 29.8"	2.6846	1.7252	10.3	164.1	5.8	55.45	171.94	35.55	291.4	Cnc
15 Jan 2018	08h46m24.43s	+17 44' 42.2"	2.6849	1.7218	10.3	165.3	5.3	55.63	173.96	36.08	291.2	Cnc
16 Jan 2018	08h45m28.91s	+17 49' 57.4"	2.6853	1.7187	10.3	166.6	4.9	55.78	176.01	36.56	291.1	Cnc
17 Jan 2018	08h44m32.60s	+17 55' 14.9"	2.6856	1.7159	10.3	167.8	4.4	55.91	178.07	37.00	291.0	Cnc
18 Jan 2018	08h43m35.55s	+18 00' 34.4"	2.6859	1.7134	10.2	169.1	4.0	56.01	180.15	37.39	290.9	Cnc
19 Jan 2018	08h42m37.84s	+18 05' 55.5"	2.6862	1.7111	10.2	170.3	3.5	56.08	182.23	37.74	290.7	Cnc
20 Jan 2018	08h41m39.54s	+18 11' 17.9"	2.6866	1.7092	10.2	171.6	3.1	56.13	184.33	38.05	290.6	Cnc
21 Jan 2018	08h40m40.71s	+18 16' 41.3"	2.6869	1.7076	10.1	172.9	2.6	56.15	186.44	38.31	290.5	Cnc
22 Jan 2018	08h39m41.43s	+18 22' 05.1"	2.6872	1.7062	10.1	174.1	2.1	56.14	188.54	38.52	290.4	Cnc
23 Jan 2018	08h38m41.77s	+18 27' 29.2"	2.6875	1.7052	10.1	175.4	1.7	56.10	190.65	38.69	290.3	Cnc
24 Jan 2018	08h37m41.81s	+18 32' 53.1"	2.6878	1.7044	10.0	176.7	1.2	56.03	192.75	38.81	290.2	Cnc
25 Jan 2018	08h36m41.61s	+18 38' 16.5"	2.6881	1.7040	10.0	177.9	0.8	55.94	194.85	38.88	290.1	Cnc
26 Jan 2018	08h35m41.26s	+18 43' 39.1"	2.6884	1.7038	9.9	179.2	0.3	55.82	196.93	38.91	290.0	Cnc
27 Jan 2018	08h34m40.82s	+18 49' 00.5"	2.6887	1.7040	9.9	179.5	0.2	55.67	199.00	38.89	290.0	Cnc
28 Jan 2018	08h33m40.37s	+18 54' 20.5"	2.6890	1.7044	10.0	178.2	0.6	55.50	201.06	38.82	289.9	Cnc
29 Jan 2018	08h32m39.99s	+18 59' 38.6"	2.6892	1.7052	10.0	177.0	1.1	55.30	203.10	38.72	289.8	Cnc
30 Jan 2018	08h31m39.73s	+19 04' 54.6"	2.6895	1.7062	10.1	175.7	1.6	55.07	205.11	38.56	289.7	Cnc
31 Jan 2018	08h30m39.68s	+19 10' 08.1"	2.6898	1.7075	10.1	174.4	2.0	54.82	207.10	38.37	289.6	Cnc
1 Feb 2018	08h29m39.90s	+19 15' 19.0"	2.6901	1.7091	10.1	173.2	2.5	54.55	209.07	38.13	289.6	Cnc