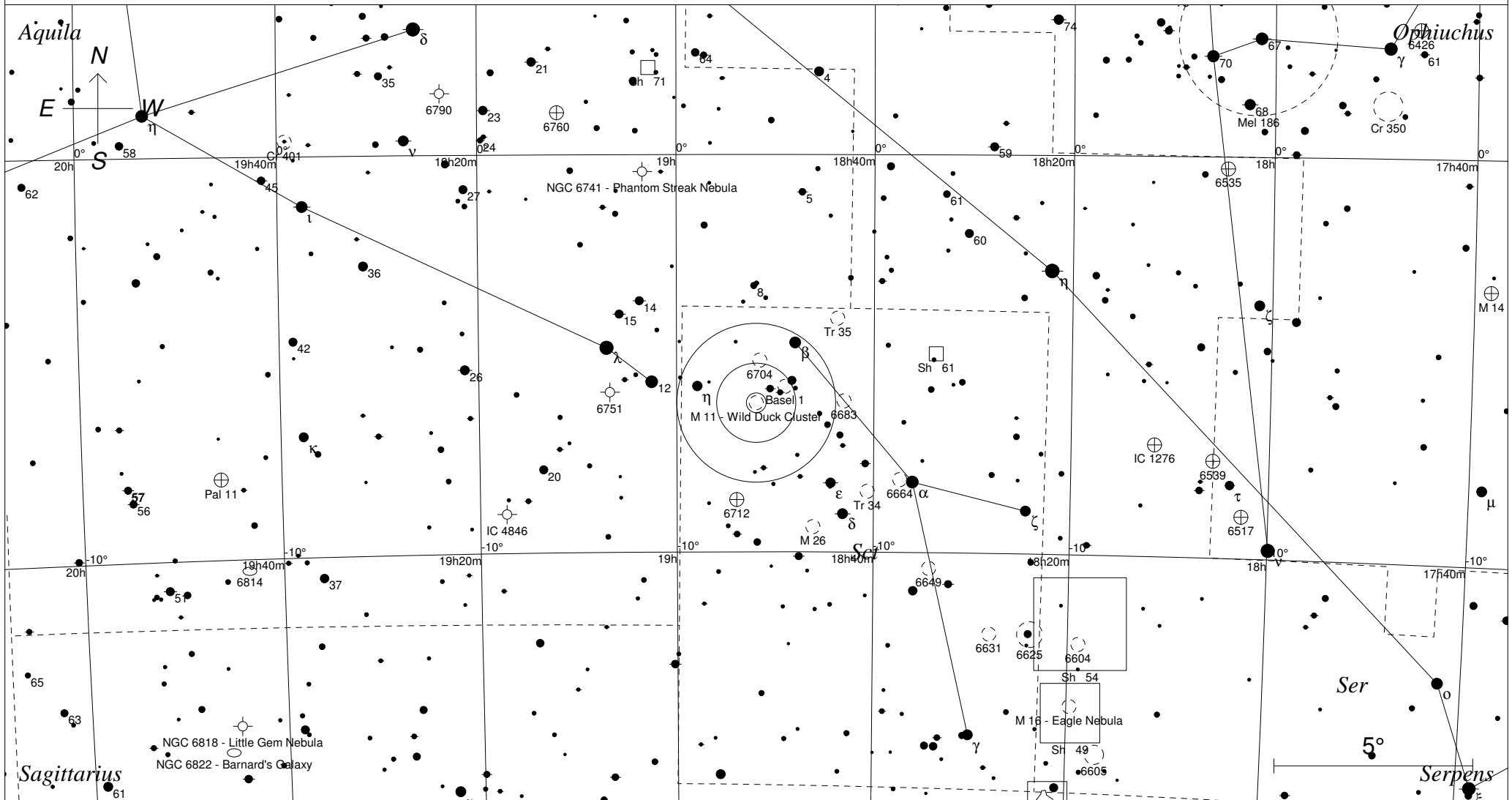


Der Wildentenhaufen Messier 11 im Schild

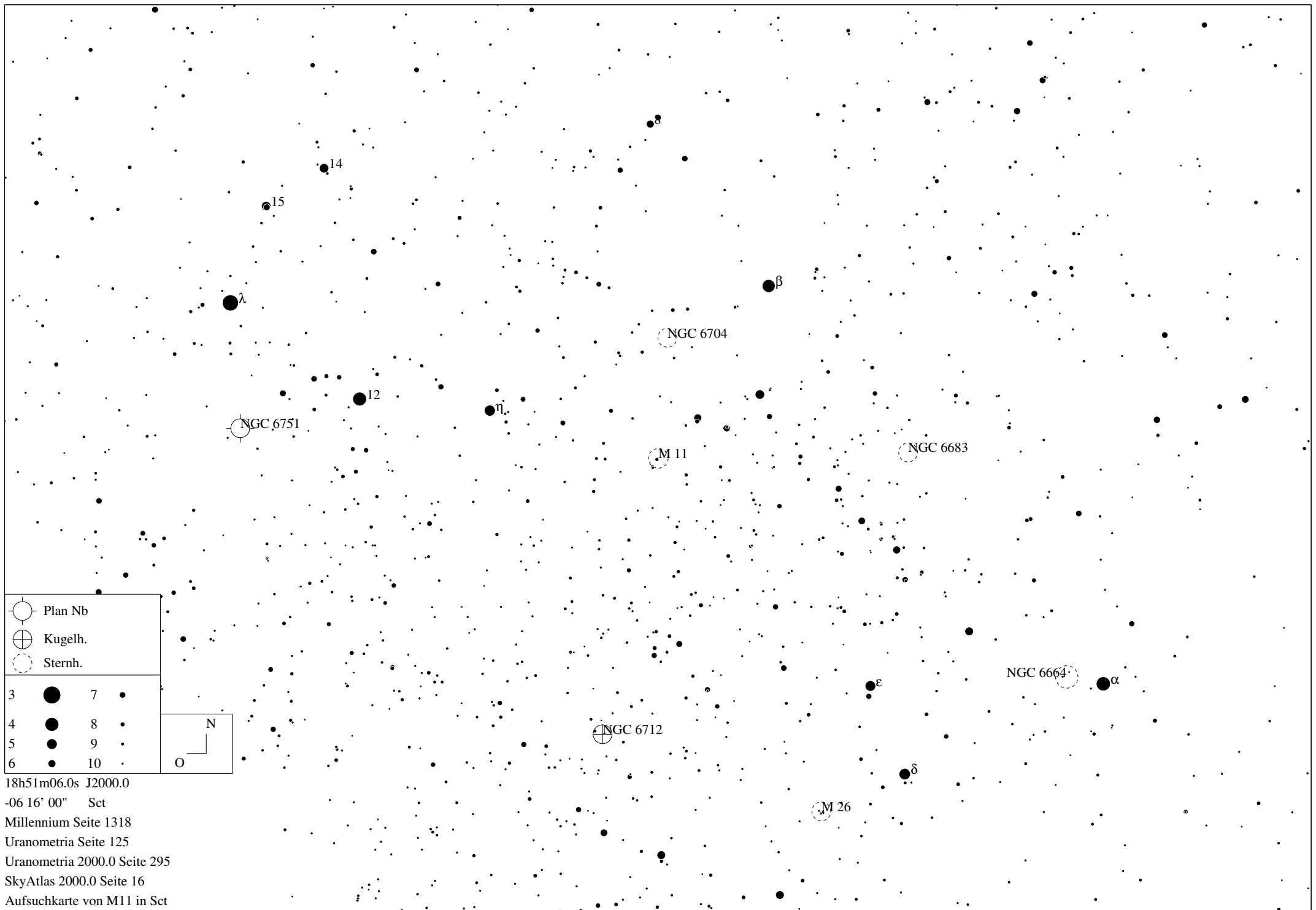





| STARS | | SYMBOLS | |
|-------|--------|--------------------|--------------------|
| ● <3 | • >7.5 | ● Multiple star | ⊠ Dark nebula |
| ● 4 | | ○ Variable star | ⊕ Globular cluster |
| ● 5 | | ☄ Comet | ⊗ X-ray source |
| ● 6 | | ○ Galaxy | ○ Open cluster |
| ● 7 | | □ Bright nebula | ○ Other object |
| | | ⊙ Planetary nebula | △ Radio source |
| | | ⊗ Quasar | |







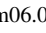
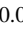
Sterne bis 7.5 mag / DS-Objekte bis 12 mag
 FOV: 20°

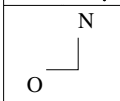
Telradkarte erstellt mit SkyMap Pro 10
 Aufsuchkarte erstellt mit Guide 9

© 2015 Andreas Schnabel



-  Plan Nb
-  Kugelh.
-  Sternh.

| | | | |
|---|---|----|---|
| 3 |  | 7 |  |
| 4 |  | 8 |  |
| 5 |  | 9 |  |
| 6 |  | 10 |  |



18h51m06.0s J2000.0
 -06 16' 00" Sct
 Millennium Seite 1318
 Uranometria Seite 125
 Uranometria 2000.0 Seite 295
 SkyAtlas 2000.0 Seite 16
 Aufsuchkarte von M11 in Sct